

information bulletin



Annual Meetings

Lisbon

9-10 June 2011



African Development Bank Group



Annual Meetings


Lisbon

June 9-10 2011



The Boards of Governors
 Welcome to the 46th Annual Meeting
 of the Board of Governors
 of the African Development Bank
 and 37th Annual Meeting
 of the Board of Governors
 of the African Development Fund

09-10 June 2011

Lisbon
 Portugal

Introduction	5
Before arrival in Lisbon	5
Mail address	5
Pre-registration	5
Travel to and from Lisbon	6
VIP Lounges at Lisbon Airport	6
Insurance	7
Visa, Passports and Entry Formalities	7
Basic Information on Visas	8
Travel Documents	8
Portuguese Diplomatic Representations	9
Procedures	10
Portuguese Visa Website	10
Customs Formalities	10
Health Services	11
Air Transport	11
Some International Flights to Lisbon Portela	
International Airport	11
Hotel Accomodation in Lisbon	12
Arrival in Lisbon	13
Reception at Lisbon Airport and Local Transport	13
Annual Meetings Information	13
Press	13
Documentation and Statements	14
Telecommunications	14
Conference Venue	14
Practical Information	15
Car Rental Services	15
Taxis	15
Buses and Trams	15
Metro (Subway)	16
Commercial Banks in Lisbon	16
High Street Shops	17
Shopping Centres	17
Places of Worship	18
Geographic Features of Portugal	20
More About Lisbon	20
Places of Interest in Lisbon	21
Weather Conditions	21
Security	22
ANNEXES	
I Diplomatic Missions Accredited to Lisbon	25
II Portuguese Diplomatic Missions Abroad	28
III Hotel Description and Accommodation Booking	31
IV List of Restaurants in Lisbon	37
V Hospitals and Special Assistance for Emergencies in Lisbon	38
VI Emergency Calls in Lisbon	39





Introduction

The 2011 Annual Meetings of the Boards of Governors of the African Development Bank Group (African Development Bank and the African Development Fund) will be held in Lisbon, Portugal, at the Lisbon Congress Centre (LCC), from 09 to 10 June 2011. They will be preceded by technical meetings.

The opening ceremony will take place at the Lisbon Congress Centre (LCC), at 9.30 a.m. on 09 June 2011.

The Annual Meetings Programme will be available online at the following address: www.afdb.org/am/programme. Participants at the Annual Meetings are invited to visit this web page regularly before and during the Meetings for information on any changes to the programme.

Before Arriving in Lisbon

Communication

All communications in connection with the Annual Meetings should be sent to the following address:

MAIL ADDRESS

Office of the Secretary General
African Development Bank
Temporary Relocation Agency
B.P. 323, 1002
TUNIS BELVEDERE, TUNISIA
Telefax + (216) 71 83 34 14 / 71 10 37 51
Telephone + (216) 71 10 28 05
E-mail: annualmeetings@afdb.org

Secretariat of the Annual Meetings of the African Development Bank — General Secretariat

Pre-Registration

Heads of delegations or other officials are kindly requested to advise the General Secretariat well in advance of the meetings, of the full composition of their respective delegations, including, if any, members from diplomatic missions and their staff.

It is highly recommended that the 2011 Annual Meetings participants register online via the link provided on the Bank's website (www.afdb.org). Participants would need the code on their invitation letters and scanned personal passport photographs in JPEG format to successfully register.

There will also be an Annual Meetings registration desk at the venue of the meeting. The desk will be open daily from 8:30 a.m. to 12:30 p.m. and 2:00 p.m. to

6:00 p.m. However on Saturday 4th and Sunday 5th the registration desk will be open from 9:00 a.m. to 1:00 p.m and 2:00 p.m. to 5:00 p.m.

Participants will require passport-size personal photographs, their letters of invitation and national passports to avail themselves of the services of the registration desk.

Participants who are unable to register online before their arrival at the venue of the meetings should call at the registration desk for full registration to ensure they can gain access to various events of the Annual Meetings.

Travel to and from Lisbon

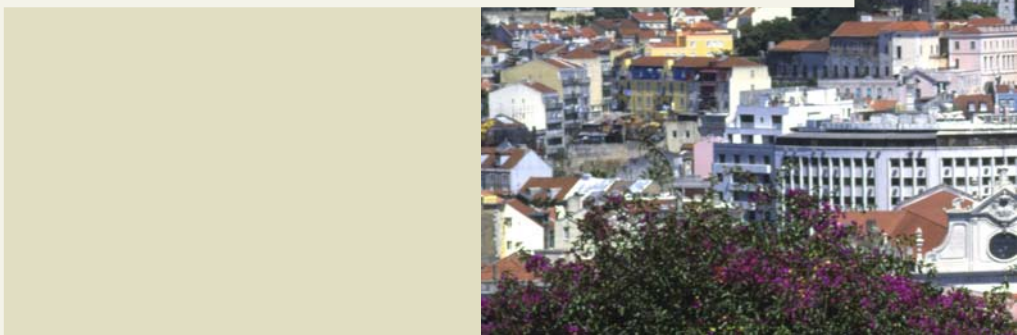
It is expected that Governors and delegates will make their own travel arrangements to and from the Annual Meetings. If assistance is required, the Secretariat Office in the Conference Centre will assist with return flight reservation and other related travel requirements.

Governors and other delegates are urged to arrange their arrival and return flight reservations as early as possible to ensure that they obtain the flights and dates of their choice. Those with open return tickets may experience difficulty obtaining preferred flights and may encounter indirect return routings.

The Government of Portugal will expedite entry and customs clearances for those members of delegations who have provided the Secretariat with their international flight numbers, date of arrival and port of entry into Lisbon. Reception facilities will also be arranged for Governors and accompanying members of the delegations. The General Secretariat will advise the Portuguese Government of delegates' expected arrival times in those cases where such information has been supplied in advance. To facilitate expeditious immigration clearance, it is important to provide particular details including delegate's name, country of issuance of passport, date of arrival and port of entry. Each delegate is therefore urged to complete and return the appropriate form. Please type or print name as it should be listed, i.e., first name(s) and/or initials, then last, family name. If the family name is not the last name, please indicate clearly by underscoring the family name.

VIP Lounges at Lisbon Airport

Upon arrival, Heads of Delegation will be welcomed through the VIP Lounges at the Lisbon Airport. For departures, the use of these lounges is not recommended. For security reasons, after entering the VIP Lounge on arrival, neither the participant nor members of the participant's party is allowed to leave it, including going to the free shop area of the airport. Moreover, all security rules (for boarding the airplanes) will apply in the VIP Lounges.



Insurance

Governors and delegates are kindly advised to arrange for their own individual medical, travel and personal effects insurance, valid for Lisbon, to cover the duration of the Meetings.

Participants at the 2011 Annual Meetings in Lisbon are not covered for insurance purposes by the AfDB. The Bank does not accept liability for personal injuries, or loss or damage to participants' private property. Therefore, participants are kindly advised to check the validity of their health, travel, personal effects and accident insurance.

Visa, Passports and Entry Formalities

The VISA requirement to enter the SCHENGEN space is one of the most important procedural steps for Annual Meetings participants who will need a SCHENGEN VISA. It is advisable to initiate the related procedures as soon as possible and, at least, 45 days prior to the Annual Meetings.

The information provided through this bulletin constitutes preliminary information aimed at clarifying from the outset, the specific situation of any given participant. However, it is recommended that any doubt (notably about requirements and procedures) be directly clarified with the competent authorities (embassies or Schengen representative authorities). The following information translates the basic legal requirements currently in force and also provides some insight on planned future changes that may affect participants in the Annual Meetings.



BASIC INFORMATION ON VISAS



The citizens of the following nationalities are exempted from visas to enter the Schengen space:

ARGENTINA
BRAZIL
CANADA
SOUTH KOREA
JAPAN

Holders of diplomatic/service/special passport from the following countries are also exempted from visa:

ALGERIA - diplomatic/service/special
ANGOLA - diplomatic/service
CAPE VERDE - diplomatic/service
MORROCO - diplomatic/service
MOZAMBIQUE - diplomatic/service
SAO TOME AND PRINCIPE - diplomatic/service
SOUTH AFRICA - diplomatic/service
TUNISIA - diplomatic/service

Other VISA exemption agreements on diplomatic/service/special passport may enter into force prior to the AfDB Annual Meetings. Portugal will notify the AfDB accordingly.

US citizens are exempted from visas to enter the SCHENGEN space, except if the purpose of the stay is an official mission and they are holders of diplomatic or service passports (the latter could be the normal case of a participant in the AfDB Annual Meetings).

In principle, all citizens from other countries (which are not part of the SCHENGEN space) need to apply for a SCHENGEN VISA (unless they hold a valid SCHENGEN VISA at the time of the meetings).

In these cases, passports or official travel documents accepted by SCHENGEN countries, should have 3 months validity beyond the intended date of departure from the territory of the Member States or, in case of several visits, after the last intended date of departure, and should contain at least 2 blank pages. The documents should also have been issued within the previous 10 years.

TRAVEL DOCUMENTS

Portugal recognizes the “laissez passer” issued by the UN as a travel document (and it can be used in place of a passport). This recognition is independent of the VISA requirement. In the event that the VISA is required, the holder of the “laissez passer” must also apply for a VISA.

PORTUGUESE DIPLOMATIC REPRESENTATIONS

All participants applying for a SCHENGEN VISA should address their applications to the Portuguese Embassy located in their country of residence, unless there is no Portuguese Embassy in that country. Please take note of the following list of countries where Portugal has no diplomatic representation. In this instance, kindly note the EU Member States that represent Portugal for SCHENGEN VISA applications:

Country of Residence	Eu State Representing Portugal
Benin	France
Botswana	Germany
Burkina Faso	France
Burundi	Belgium
Cameroon	Spain
Comoros	France
Congo	France
Cote D'ivoire	Spain
Djibouti	France
Eritrea	Netherlands
Ethiopia	Spain
Gabon	Spain
Ghana	Spain
Guinea	Germany
Equatorial Guinea	Spain
North Korea	Germany
Kuwait	Spain
Madagascar	France
Malawi	Germany
Mali	France
Mauritania	Spain
Mauritius	France
Namibia	Spain
Niger	France
Central African Republic	France
D.R. Congo	Belgium
Rwanda	Belgium
Seychelles	France
Sudan	France
Tanzania	France
Togo	France
Uganda	France
Zambia	France
U.A.E	Spain



The citizens of THE GAMBIA, LIBERIA and SIERRA LEONE must go to the Portuguese Embassy in Dakar, SENEGAL; those from SOMALIA to the Portuguese Embassy in Nairobi, KENYA and those from CHAD to the Portuguese Embassy in Abuja, NIGERIA.

PROCEDURES

To obtain a SCHENGEN VISA, the following documents must be provided to the Embassy and should be duly signed:

- Signed and filled in Form of Application;
- One passport photograph;
- Invitation from the AfDB to participate in the Annual Meetings;
- Authentic and valid travel document (usually the passport) valid for more than 3 months beyond the anticipated exit date, photocopy of the passport and previous visas;
- Proof of “regular status” (residence in the country where the application is made) in case of being a citizen from a country other than the one where the visa is sought);
- Reservation of inbound and outbound flight;
- Travel Medical Insurance (minimum coverage of EUR 30,000 to cover any expenses which might arise in connection with repatriation for medical reasons, urgent medical attention and/or emergency hospital care or death, during the stay(s) on the territory of the Member States);
- Hotel reservation-booking.

For delegations, it is advisable to deal with all applications in a sole aggregated file compiling the different applications from members.

PORTUGUESE VISA WEBSITE

For additional and updated information, please consult the following web link:
www.secomunidades.pt/vistos

Customs Formalities

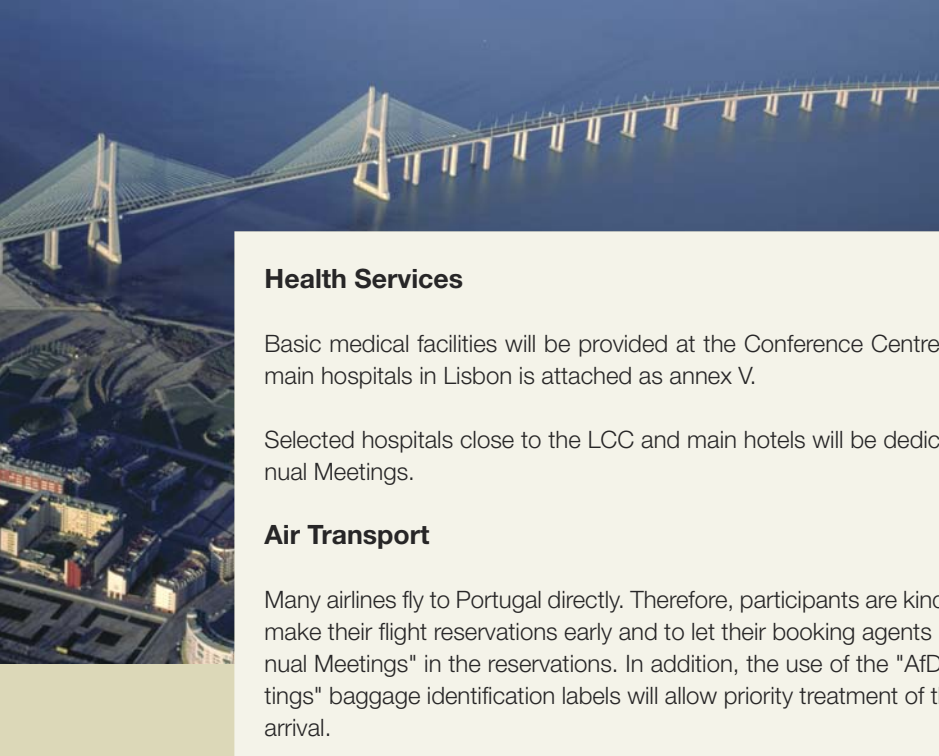
Visitors to Portugal from non-European Union countries are allowed two litres of still wine, one litre of spirits or strong liqueurs and sixteen litres of beer. They are also allowed two hundred units of cigarettes, fifty units of cigars and 250 grams of smoking tobacco.

Goods of a non-commercial nature imported in the personal luggage of passengers, whose total value does not exceed EUR 300 per person, are exempt from customs, VAT and excise duties. For air and sea travellers the monetary threshold is EUR 430.

Personal effects such as jewellery and cash amounts exceeding EUR 5,000 should be declared at the customs.

Certain goods are totally prohibited or strongly restricted (e.g. drugs, drugs precursors, radioactive products, offensive weapons, firearms, explosives and ammunition, protected species of plants and animals, as well as goods made from them).





Health Services

Basic medical facilities will be provided at the Conference Centre. The list of the main hospitals in Lisbon is attached as annex V.

Selected hospitals close to the LCC and main hotels will be dedicated to the Annual Meetings.

Air Transport

Many airlines fly to Portugal directly. Therefore, participants are kindly requested to make their flight reservations early and to let their booking agents note "AfDB Annual Meetings" in the reservations. In addition, the use of the "AfDB Annual Meetings" baggage identification labels will allow priority treatment of their luggage on arrival.

SOME INTERNATIONAL FLIGHTS TO LISBON PORTELA INTERNATIONAL AIRPORT

AIRLINES	ADDRESS	TEL	FAX	WEBSITE
Tap Portugal	Aeroporto de Lisbon, Ed. 25 r/c dir., 1704-801 Lisbon	+351 707 205 700	+351 21 8416572	www.flytap.com
Air Berlin	Alameda Comunidades Portuguesas Bloco 4323, Lisbon 1700-111 LISBON	+351 808 202 737	+351 218 484 888	www.airberlin.com
Air France	Lisbon's International Airport 1700-008 LISBON	+351 707 202 800	+351 218 478 942	www.airfrance.com
Alitalia	Praça Marquês Pombal 1,5°-B, Lisbon 1269-021 LISBON	+351 213 536 453	+351 213 520 680	www.alitalia.com
British Airways	Lisbon's International Airport 1700-008 LISBON	+351 808 200 125	+351 808 220 125	www.britishairways.com
Iberia	Portela de Sacavém Alameda das Comunidades Portuguesas 1700 Lisbon	+351 707 200 000	+351 218497668	www.iberia.com
KLM	Campo Grande 220 B 1º Lisbon, 1700-094 LISBON	+351 707222747	+351 214 154 033	www.klm.com.cn
Lufthansa	Av. D.João II Edifício Central Office, 1.17.03 10ª 1990-084 Lisbon	+351 707 782 782	+351 707 780 798	www.lufthansa.com
Royal Air Maroc	Av. da Liberdade, 225-A, 1250-142 Lisbon	+351 213 500 023	+351 213 500 029	www.royalairmaroc.com
TAAG	Avenida Brasil 31-A 1700-062 LISBON	+351 213 575 899	+351 213 532 014	www.taag.pt
Tunisair	Rua C Edifício 124, Sala 1 A/B Aeroporto de Lisbon 1700-008 LISBON	+351 218 496 350	+351 218 496 346	www.tunisair.com
Turkish Airlines	Avenida Fontes P. Melo 35,4º H, 1050-118 Lisbon	+351 213 163 120	+351 213 163 129	www.thy.com

Hotel Accommodation In Lisbon

The Secretariat of the Annual Meetings will book accommodation in Lisbon for Governors, Alternate Governors, Special Guests, Executive Directors, Alternate Executive Directors of the Bank, Bank's Senior Management and staff.

Other participants and observers at the Annual Meetings are requested to make reservations at the selected hotel of their choice, with the assistance of a Reservation Agency – VEGA - designated by the National Organizing Committee to handle all issues related to hotel reservations. They are advised to include the name of their booked hotel on the registration forms which will be submitted to the AfDB.

Participants should confirm their reservation before 30 April 2011. After this deadline, the selected hotels will not guarantee room availability (See Annex III).

The contacts of the Reservation Agency are given below:

Tel: +351 213 976 053

Fax: + 351 213 976 058

E-mail: bad@vega.pt

Please find attached as Annex III, the list of hotels in Lisbon selected by the Bank. All hotels accept major credit cards.



Arrival in Lisbon



Reception at Lisbon Airport and Local Transport

An Information & Protocol Desk will be set up at the Lisbon International Airport to expedite entry and departure formalities for delegates. For each Governor of member countries, the Portuguese Government will provide one car and a driver. Shuttle buses will be available for conveying participants from the airport to the hotels and from the hotels to the venue of the Annual Meetings. Participants are kindly requested to wear their identification stickers visibly on them and make use of the "AfDB Annual Meetings" baggage identification labels, which will allow priority treatment of the luggage.

Annual Meetings Information

An Information Desk will be located in the main lobby of the Lisbon Congress Centre.

Information about the Annual Meetings will be available on the Bank's website (www.afdb.org), on the website of the Portuguese Ministry of Finance (www.min-financas.pt) and on the 2011 Annual Meetings dedicated website (www.afdb.org/AM).

Press

The External Relations and Communication Unit of the AfDB will set up a communication desk at the Conference Centre and will provide a detailed programme of its activities before and during the Annual Meetings. Press representatives are requested to contact the communication desk at the Press Centre for accreditation and other information on the Meetings, or any requests for formal interviews. The 2011 Annual Meetings in Lisbon, Portugal, will provide an opportunity for the African Development Bank to demonstrate the unique qualities that make the Bank the region's premier development finance institution.

Documentation and Statements

Documents in English and French will be available at the Documents Distribution Desk at the Conference Centre as from 4 June 2011.

Governors who wish to address the Annual Meetings should provide the Secretariat of the Boards of Governors at the Conference Centre with a copy of the text of their statement, forty-eight (48) hours prior to delivery. The purpose of this request is to facilitate the publication of these documents in their original language for participants and the press.

Telecommunications

International telephone services allow for direct communication between Lisbon and most countries. There are internet and booth phone cards that can be used for both domestic and international calls. Participants can also arrange to have a mobile phone for the duration of their stay in Portugal. GSM and CDMA networks are both available. Telephone and telefax are available in the hotels at the delegates' expense.

Conference Venue



Located near the Tagus River close to the historic buildings of Belém District, the Lisbon Congress Centre is a welcoming space for anyone wishing to hold congresses, conferences, meetings, exhibitions and other events.

Three large entrance halls allow the holding of different kind of events simultaneously with maximum comfort and efficiency. The venue is served with up-to-date audio-visual and IT equipment. Wi-Fi is also available.

Lisbon Congress Centre (LCC)
Praça das Indústrias
1300- 307 Lisbon - Portugal
Tel + 351 213 601 400/1
Fax + 351 213 639 450
E-mail: lisboacc@aip.pt
www.lisboacc.pt

Practical Information

The national currency is the Euro. It comes in units of €0.01; €0.02; €0.05; €0.10; €0.20; €0.50; €1; €2; €5; €10; €20; €50; €100; €200; €500.

<u>Official language</u>	Portuguese
<u>Electricity</u>	220 V AC 50 hz.
<u>Local time</u>	GMT +1
<u>Clothing</u>	Summer clothing

CAR RENTAL SERVICES

CAR RENTAL COMPANY	ADDRESS	TELEPHONE	FAX	WEBSITE
Avis	Lisbon's International Airport 1700-008 Lisbon	+ 351 21 843 55 50	+351 218 463 170	www.avis.com.pt
Hertz	Lisbon's International Airport 1700-008 Lisbon	+351 21 843 86 60	+351 21 840 14 96	www.hertz.pt
Europcar	Lisbon's International Airport 1700-008 Lisbon	+ 351 219 40 77 90	+351 219 42 52 39	www.europcar.pt

TAXIS

There are plenty of inexpensive taxis in Lisbon. The current minimum charge is € 2 (€2.50 at night). To order a cab (for €0.80-€2 extra) you may call the following numbers:

TAXIS COMPANY	TELEPHONE
Radio Taxis de Lisboa	+ 351 218 119 000
Autocoope	+ 351 217 932 756
Teletáxis	+ 351 218 111 100



BUSES AND TRAMS

Bus fare (purchased from the driver) €1.50

Ticket: 1 day* €3.95

For more information please call (+351) 21 361 30 00 or visit the site <http://www.carris.pt/> (English version).

HIGH STREET SHOPS

Most shops are open from 10 a.m. to 7 p.m. - Monday to Saturday (though small shops are usually closed on Saturday afternoon).

Here are some suggestions:

Avenida da Liberdade / Rua Castilho

A large avenue in the heart of the city offers green areas, cafés, restaurants and many brand clothing shops.

Baixa / Chiado

The oldest quarter of the city offers various selections of shops. There are many old Portuguese shops, clothing, shoes, accessories, bookstores, handicraft, decoration, leather, jewellery and famous cafés in this area.

SHOPPING CENTRES

Amoreiras Shopping Centre

Opening hours: every day between 10 a.m. and 11 p.m. (stores and restaurants).
Some services close at 10 p.m.

Address: Av. Duarte Pacheco, Loja 2037

How to get there: Rato and Marquês Pombal (Yellow Line)

Armazéns do Chiado

Opening hours: every day between 10 a.m. and 10 p.m. (stores) 11 p.m. (restaurants).

Address: R. do Carmo, n.º 2

How to get there: Baixa-Chiado (Blue Line)

Galerias Saldanha Residence

Opening hours: every day between 10 a.m. and 11 p.m.

Address: Av. Fontes Pereira de Melo, 42 E

How to get there: Saldanha (Yellow Line)

Vasco da Gama Shopping Centre

Located in the newest city centre, Expo, near the River Tagus, it is a perfect shopping place with 156 shops and 35 restaurants. Opening hours: every day between 10 a.m. and 12 p.m. (some of the stores open at 9 a.m.)

Address: Av. D. João II

How to get there: Oriente (Red Line)

Colombo Shopping Centre

Located next to Benfica Football Stadium, the biggest shopping centre in the Iberian Peninsula makes it a worthwhile visit. It has 3 floors with 437 shops and 69 restaurants. Opening hours: every day between 10 a.m. and midnight.

Address: Av. Lusitana, Letras CC

How to get there: Colégio Militar/ Luz (Blue Line)

PLACES OF WORSHIP

The most predominant religion in Portugal is **Roman Catholicism**. Approximately 84% of the population of **Portugal** is nominally Catholic. There are many churches in Lisbon (information could be provided on the location of other places of worship).

There are also non-Christian communities and places of worship in Portugal.

The main Mosque in Lisbon is the:

Lisbon Mosque

Address: Av. José Malhoa (Praça de Espanha)

1000 Lisbon

Tel.: (+351) 21 387 41 42 / 21 387 91 84

Fax: (+351) 21 387 22 30

E-mail: cil.lisboa@gmail.com

info@comunidadeislamica.pt

www.comunidadeislamica.pt

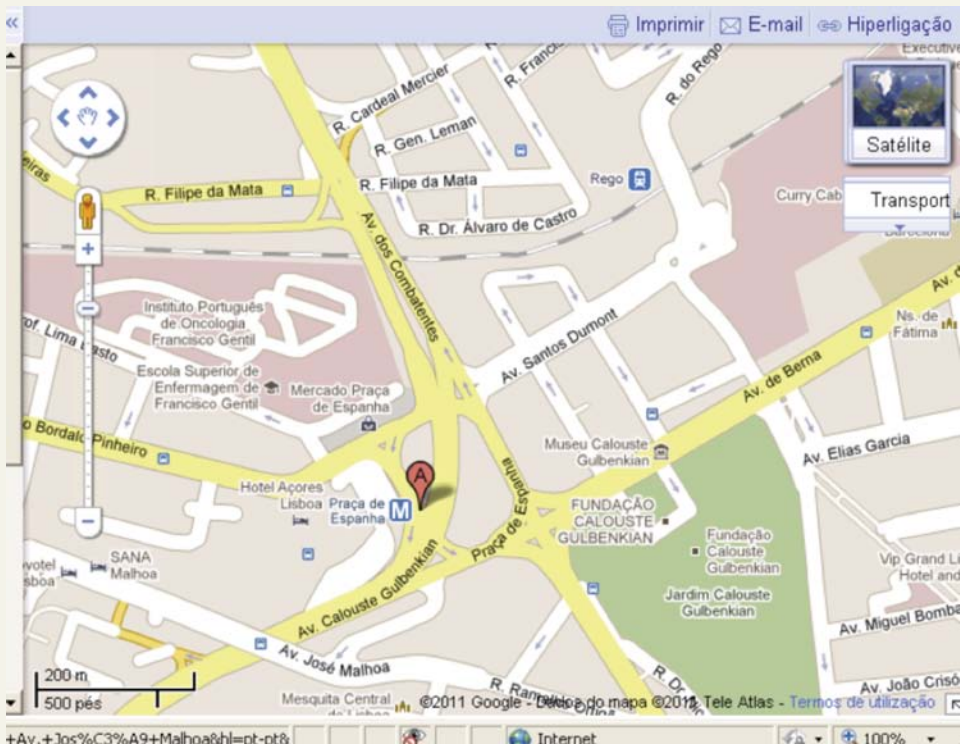
IMAM FROM THE MAIN MOSQUE

Sheikh David Munir

Tel.: (+351) 21 387 22 20

Fax: (+351) 21 387 22 30

E-mail: sdmunir@gmail.com



The main Hindu Temple in Lisbon is the:

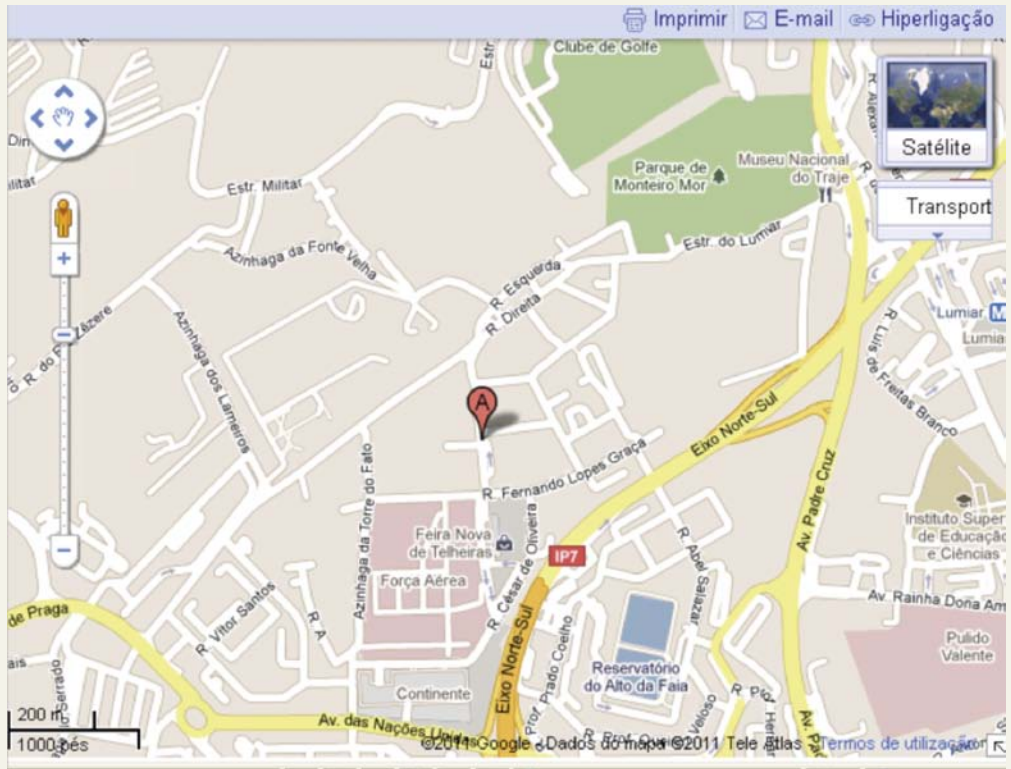
Temple «**RADHA KRISHNA**»

Address: Alameda Mahatma Gandhi

1600-500 Lisbon

Tel: (+351) 217 576 524 / (+351) 217 524 981/2

Fax: (+351) 217 524 459



Temple Schedule

8 a.m. – 10 a.m.

7 a.m. – 9 p.m.

Prayer Schedule

8.30 a.m. – 9 a.m.

8 p.m. – 8.30 p.m.

The main **Jewish Synagogue** in Lisbon is the:

Israeli Community of Lisbon

Tel: (+351) 213 931 130

Fax: (+351) 213 931 139

Website : www.cilisboa.org

Sinagoga Shaaré Tikvá

Rua Alexandre Herculano 59 - 1250-010

Prayer Schedule

Fridays – 8 p.m.

Saturdays – 9 a.m.

The main **Ismaili** Centre in Lisbon is:

AKDN Portugal

Centro Ismaili, Avenida Lusíada, 1600-001 Lisbon

Tel: (+351) 21 722 9001

Fax: (+351) 21 722 9011

E-mail: akdn.portugal@akdn.org

www.akdn.org/portugal

GEOGRAPHIC FEATURES OF PORTUGAL

Portugal covers a total land area of 92 thousand square kilometres. It shares land border with Spain.

The population of Portugal is about 10 million people. Most of the people live in the west coast of the country, mainly in the cities of Lisbon and Oporto. Lisbon, the venue of the Annual Meetings, is said to be the world sixth destination for congresses, one of the most charming cities in the world for a 4-day city break and one of the top destinations selected by European consumers.

MORE ABOUT LISBON

Legend has it that Lisbon was founded by Ulysses. The name comes from “Olisipo”, which has its origins in the Phoenician words “Allis Ubbo”, meaning “enchanting port”. It was most likely founded by the Phoenicians and styled by the Moors, which is reflected in the strong Arabic influences. It was, after all, ruled by the Moors for 450 years. In the 12th century, the Christians re-conquered the city but it was not until the mid-13th century that Lisbon became the country’s capital.

With the beginning of the Portuguese Age of Discoveries, Lisbon became enriched by its status as a spice and jewellery trade centre. The breakthrough for Portuguese expansion came in 1498 when Vasco da Gama discovered the sea route to India. This was indeed the beginning of a Golden Age, characterised by the Manueline architectural style named after King Manuel I, with its typical decorative use of maritime motifs. Over the centuries Lisbon naturally grew and changed. When the city centre was almost completely destroyed by the earthquake of 1755, it was rebuilt by Marquise de Pombal, who thus created the Baixa Pombalina, a commercial area that still retains much of its original layout. Lisbon is a historic capital, a potpourri of unusual character and charm, where 800 years of cultural influences mingle with modern trends and lifestyles, creating spectacular contrasts.

PLACES OF INTEREST IN LISBON



	ADDRESS	TELEPHONE	FAX	MAIL
Jerónimos Monastery www.mosteirojeroni	Praça do Império 1400-206 Lisbon	+351 213 620 034	+351 213 639 145	mosteirojeronimos@igespar.pt
Belem Tower www.mosteirojeroni	Av. de Brasília	+351 213 620 034	+351 213 639 145	mosteirojeronimos@igespar.pt
National Coach Museum www.museudoscoches.pt	Praça Afonso de Albuquerque 1300-004 Lisbon	+351 213 610 850	+351 213 637 246	mncoches@imc-ip.pt
National Tile Museu www.mnazulejo-imc-ip.pt	Rua da Madre Deus, 4 1900-312 Lisbon	+351 218 100 340	+351 218 100 369	mnazulejo@imc-ip.pt
National Art Museum www.mnarteantiga-ipmuseus.pt	Rua das Janelas Verdes 1249-017 Lisbon	+351 213 912 800	+351 213 973 703	mnarteantiga@ipmuseus.pt
Calouste Gulbenkian Museum www.museum.gulbenkian.pt	Av. de Berba, 45 A 1067-001 Lisbon	+351 217 823 000	+351 217 823 032	camjap@gulbenkian.pt
Oceanarium www.oceanario.pt	Esplanada D. Carlos I 1990-005 Lisbon	+351 218 917 002	+351 218 955 762	info@oceanario.pt
Jorge Castle www.castelodesaojorge.pt	Rua Chão da Feira 1100 Lisbon	+351 218 800 620		info@castelodesaojorge.pt

WEATHER CONDITIONS

There are four seasons: autumn, winter, spring and summer (June to August is the sunny and dry season). Lisbon has a pleasant climate. The period of the Annual Meetings will be the beginning of summer. Light wear is recommended, though nights can be chilly.



Security

The security situation in Portugal is very favourable, and Lisbon is considered to be one of the safest cities in Europe. Serious random violent crime is practically unheard of in this city. Lisbon is a safe city to walk in both during the day and night; however, participants should always be alert to scam artists, purse snatchers and petty thieves. The number to dial in case of emergency is 112 from any phone.

Not all taxi drivers in Lisbon speak English. Participants are advised to carry the AfDB security card that has the name of all hotels and the major attractions in English and Portuguese. Make your destination clear to the taxi driver before getting in the taxi.

Annual Meetings badges will be required for access to the Conference Centre and for admission to the meeting rooms, offices and all other facilities. All participants will have to pass through the security screening stations to gain access to the facility.

Participants should be aware of their personal security in and around Lisbon, and special attention should be taken to ensure that they are aware of the emergency procedures in their hotels in case of fire, natural disaster or hazard by checking the floor plan mounted on the door of each hotel room. In case of any emergency, participants should remain calm and proceed to the nearest exit. Do not use the elevators. While in the hotel room it is advisable to keep the door locked and to use the peephole. If in doubt as to the identity of anyone trying to gain access to the room, please alert the hotel staff for clarification.

The PECAM Coordination Centre (PCC) inside the conference facility will function as a focal point for safety, security, liaison and all coordination issues; please direct any questions to the PCC.

All aspects related to personal security accompanying Heads of Delegation must be communicated in advance to the Portuguese Protocol of State (Ministry for Foreign Affairs).





Diplomatic Missions Accredited to Lisbon (AfDB Shareholder Countries)

Angola

Av. da República, 68
1069-213 Lisbon
Tel: +351 217 961 830 – 217 967 041/43
Fax: +351 217 971 238
E-mail: emb.angola@mail.telepac.pt
www.embaixadadeangola.org

Argentina

Av. João Crisóstomo, 8 r/c Esq.
1000-178 Lisbon
Tel: +351 217 977 311 – 217 959 223
Fax: +351 217 959 225 – 217 974 702
E-mail: embargpi@mail.telepac.pt

Austria

Av. Infante Santo, 43-4.º
1399-046 Lisbon
Tel: +351 213 943 900
Fax: +351 213 958 224
E-mail: lissabon-ob@bmeia.gv.at

Belgium

Praça Marquês de Pombal, 14-6.º
1269-024 Lisbon
Tel: +351 213170510
Fax: +351 213561556
E-mail: lisbon@diplobel.fed.be
www.diplomatie.be/lisbon/

Brazil

Estrada das Laranjeiras, nº 144
1649-021 Lisbon
Tel: +351 21 724 8510
Fax: +351 21 726 7623
E-mail: geral@embaixadadobrasil.pt
www.embaixadadobrasil.pt/

Canada

Avenida da Liberdade, 198/200, 3.º
1269-121 Lisbon
Tel: +351 213 164 600
Fax: +351 213 164 693
E-mail: lsbon-cs@international.gc.ca
www.canadainternational.gc.ca/portugal/

Cape Verde

Avenida do Restelo, 33
1449-025 Lisbon
Tel: +351 213 041 440
Fax: +351 213 041 466
E-mail: info@embcv.pt
www.embcv.pt/

China

Rua de S. Caetano, 2 (à Lapa)

1249-024 Lisbon
Tel: +351 213 928 430
Fax: +351 213 928 431
E-mail: chinaemb_pt@mfa.gov.cn
http://pt.chineseembassy.org

Denmark

Rua Castilho, 14-C-3.º
1296-077 Lisbon
Tel: +351 213 512 960
Fax: +351 213 554 615
E-mail: lisamb@um.dk
www.amblissabon.um.dk/en

Egypt

Av. D. Vasco da Gama, 8
1400-128 Lisbon
Tel: +351 213 018 301 / 8323 / 42
Fax: +351 213 017 909
egyptembassyportugal@net.novis.pt

Finland

Rua do Possolo 76-1º
1350-251 Lisbon
Tel: +351 213 933 040
Fax: +351 213 904 758
E-mail: sanomat.lis@formin.fi
www.finlandia.org.pt

France

Rua de Santos-O-Velho, 5
1249-079 Lisbon
Tel: +351 213 939 100
Fax: +351 213 939 150 / 51
E-mail: ambafrance@hotmail.com
www.ambafrance-pt.org

Germany

Campo dos Mártires da Pátria, 38
1169-043 Lisbon
Tel: +351 218 810 2 10
Fax: +351 218 853 8 46
E-mail: info@lissabon.diplo.de
www.lissabon.diplo.de

Guinea Bissau

R. de Alcolena, 17
1400-004 Lisbon
Tel: +351 213 009 080
Fax: +351 213 009 081
www.republica-da-guine-bissau.org

India

Rua Pêro da Covilhã, 16
1400-297 Lisbon
Tel: +351 213 041 090

Fax: +351 213 016 576
E-mail: consular@indembassy-lisbon.org
www.indembassy-lisbon.org

Italy

Largo do Conde Pombeiro, 6
1150-100 Lisbon
Tel: +351 213 515 320
Fax: +351 213 154 926
E-mail: ambasciata.lisbona@esteri.it
www.ambblisbona.esteri.it

Japan

Avenida da Liberdade, 245 - 6.º
1269-033 Lisbon
Tel: +351 213 110 560
Fax: +351 213 543 975
E-mail: cultural@embjapao.pt
<http://www.pt.emb-japan.go.jp>

Korea

Edifício Presidente
Av. Miguel Bombarda, 36 - 7.º
1050-165 Lisbon
Tel: +351 217 817 130
Fax: +351 217 977 176
E-mail: embpt@mofat.go.kr

Libya

Av. das Descobertas, 24
1400-092 Lisbon
Tel: +351 213 016 30/2
Fax: +351 213 012 378
E-mail: bureau.popular.libia@clix.pt

Morocco

Rua Alto do Duque, 21
(Ao Restelo)
1400 -009 Lisbon
Tel: +351 213 008 080
Fax: +351 213 020 935
E-mail: sifmar@emb-marrocos.pt
<http://www.emb-marrocos.pt/>
(em construção)

Mozambique

Av. de Berna, 7
1050-036 Lisbon
Tel: +351 217 971 994
Fax: +351 217 932 720
embamoc.portugal@minec.gov.mz
www.mozambique.mz

Netherlands (The)

Av. Infante Santo, 43 - 5.º
1399-011 Lisbon
Tel: +351 213 914 900
Fax: +351 213 914 950
E-mail: nlgovlis@netcabo.pt
www.emb-paisesbaixos.pt

Nigeria

Av. D. Vasco da Gama, 3
1400-127 Lisbon
Tel: +351 213 031 290
Fax: +351 213 018 152
E-mail: nigeriaemblisbon@portugalmail.pt

Norway

Av. Vasco da Gama, 1
1400-127 Lisbon
Tel: +351 213 015 344
Fax: +351 213 016 158
E-mail: emb.lisbon@mfa.no
www.noruega.org.pt

Senegal

Rua António Pedro, 46 - 2º
1000 -039 LISBON
Tel: +351 213 160 180
Fax: +351 213 162 530
ambassenelisbnone@mail.telepac.pt

South Africa

Av. Luis Bivar, 10
1069-024 Lisbon
Tel: +351 213 192 200
Fax: +351 213 555 931 – 213 535 713
E-mail: embsa@embaixada-africadosul.pt
www.embaixada-africadosul.pt

Spain

Rua do Salitre, 1
1269-052 Lisbon
Tel: +351 213 472 381 / 2 / 3
Fax: +351 213 472 384
E-mail: emb.lisboa@maec.es
www.maec.es

Sweden

Rua Miguel Lupi, 12, 2.º
1249-077 Lisbon
Tel: +351 213 942 260
Fax: +351 213942261
E-mail: emb.suecia.lis@mail.telepac.pt
www.swedenabroad.com/lisbon

Switzerland

Travessa do Jardim, 17
1350-185 Lisbon
Tel: +351 21 3944090
Fax: +351 21 3955945
E-mail: Vertretung@lis.rep.admin.ch
www.eda.admin.ch/lisbon

Togo

Chancery: R. do Alecrim, 47 -4ºDtº
Rinchoa
2635-269 RIO DE MOURO
Tel: +351 219 167 204
Fax: +351 219 162 108

Tunisia

R Rodrigo Rebelo 16
1400-318 Lisbon
Tel: +351 213 010 330
Fax: +351 213 016 817
E-mail: at.lisbonne@netcabo.pt

United Kingdom

Rua de São Bernardo, 33
1249-082 Lisbon
Tel: +351 213 924 000
Fax: +351 213 924 021
E-mail: lisbon.consulate@fco.gov.uk
www.ukinportugal.fco.gov.uk

United States of America

Av. das Forças Armadas
1600-081 Lisbon
Tel: +351 217 273 300
Fax: +351 217 269 109
Email: lisbonweb@state.gov
<http://portugal.usembassy.gov/>

European Union

Largo Jean Monnet, 1, 6º
1269-070 LISBON
Tel: +351 213 504 900
Fax: +351 213 540 004
E-mail: eplisboa@europarl.europa.eu

CONSULATES GENERAL**Consulate General of Benin and Mali**

Av. Praia da Vitória, 12 – 1º E
1000-247 LISBON
Tel: +351 213 563 732

Consulate General of Central Africa

R. Torcato José Clavine, nº 13 Piso
1º-Dirº
2800-710 ALMADA
Tel: +351 212 743 512
Fax: +351 212 748 664
cons.rep.centro.africana@gmail.com

Consulate General of Cote d'Ivoire

R. D. Constantino de Bragança, 14
1400-112 LISBON
Tel: +351 213 016 671
Fax: +351 213 011 512

Consulate General of Guinea

Av. da República, 44 – 5º Dto

1050-194 Lisbon
Tel: +351 21 793 75 70
Fax: +351 21 793 35 53
E-mail : conguillisbonne@yahoo.fr

Consulate General of Kingdom of Lesotho

Pólo Univ. do Alto da Ajuda
R. Almerindo Lessa
1349-055 LISBON
Tel: +351 965012259 /
+351 213 619 442
sousalara@istcsp.upl.pt

Consulate General of Liberia

R. Tomás Ribeiro, 40 – 3º Esq
1050-230 LISBON
Tel: +351 213 543 958
Fax: +351 213 543 958
consuladoliberiaportugal@gmail.com

Annex II

Portuguese Diplomatic Missions Abroad (in AfDB Shareholder Countries)

Algeria

7, Rue Mohamed Khoudi
El Biar - Alger
Algeria
Tel: 002 132 192 55 82
Fax: 002 132 192 53 13
E-mail: embportdz@yahoo.fr

Angola

Avenida de Portugal, 50
Luanda
Angola
Fax: 002 442 223 903 92
embaixada.portugal@netcabo.co.ao

Argentina

Maipú 942 - 17° Piso
1340 Buenos Aires
Argentina
Tel: 005 411 431 235 24
Fax: 005 411 431 125 86
E-mail: embpor@buenosaires.dgaccp.pt

Austria

Opernring, 3 / 1 / 1
A 1010 Vienna
Austria
Tel.: 004 315 867 536-0
Fax: 004 315 867 536 99
E-mail: portugal@portembassy.at

Belgium

Av. De la Toison d'Or, 55
1060 Brussels
Belgium
Tel: 003 225 330 700
Fax: 003 225 390 773
E-mail: ambassade.portugal@skynet.be
Website: www.embaixadadeportugal.be

Brazil

SES - Avenida das Nações, Lote 2
CEP 70402 - 900
Brasília DF 70402-900
Brazil
Tel: 005 561 303 296 00/ 1
Fax: 005 561 303 296 42
E-mail: embaixadadeportugal@embaixadadeportugal.org.br

Canada

645, Island Park Drive
Ottawa. On
K1Y 0B8
Canada
Tel: 001 613 729 29 22

Fax: 001 613 729 423 6/8239
E-mail: embportugal@embportugal-ottawa.org
www.embportugal-ottawa.org

Cape Verde

Avenida OUA
Achada de Santo António
CP 160
Cidade da Praia
Ilha de Santiago
Cape Verde
Tel: 002 382 626 097
Fax: 002 382 623 222
E-mail: embporpraia@gmail.com

China

San Li Tun Dong Wu Jie, n°8
100600 Beijing, China
Tel.: 008 610 653 232 42
Fax: 008 610 653 246 37
E-mail: pequim@mne.pt

Republic Democratic of Congo

Avenue des Aviateurs, 270,
Commune de la Gombe - Kinshasa
Tel: 002 438 151 612 78
Fax: 008 713 826 800 91
E-mail: ambassadeportugal@micronet.ne

Denmark

Tolbodgade 31, 1 Th,
1253 Copenhagen
Denmark
Tel: 004 533 360 072
Fax: 004 533 149 214
E-mail: embport@get2net.dk

Egypt

El Saleh Ayoub Street Nr. 1,
3rd floor, ap. 31
Zamalek-Cairo-Egypt
Egypt
Tel: 002 027 350 779 - 735 07 81
Fax: 002 027 350 790
E-mail: embpcai@link.net

Ethiopia

"Dembel" City Centre 8th Floor
Bole Road
Adis Abeba
Ethiopia
Tel: 002 511 155 268 99
Fax: 002 511 155 268 85
E-mail: embportaddis@gmail.com
Caixa Postal: P. O Box 438-1110

Finland

Unioninkatu 22
FI-00130 Helsinki
Finland
Tel: 003 589 682 4370
Fax: 003 589 663 550
E-mail: emb.port@portugal.fi

France

3, rue de Noisiel
75116 Paris
France
Tel: 003 314 727 35 29
Fax: 003 314 405 94 02
E-mail: mailto@embaixada-portugal-fr.org
www.embaixada-portugal-fr.org

Germany

Zimmerstrasse, 56
10117 Berlin
Germany
Tel: 004 930 590 063 500 /
305 900 636 65
Fax: 004 930 590 063 600
E-mail: mail@botschaftportugal.de

Guinea Bissau

Avenida Cidade de Lisbon
Caixa Postal 276
Guinea Bissau
Tel.: 002 452 012 79
Fax: 002 452 012 69
E-mail: embaixada@bissau.dgaccp.pt

India

No. 4, Panchsheel Marg, Chanakyapuri
New Delhi - 110021
India
Tel.: 009 111 261 411 06
Fax: 009 111 261 422 15
E-mail: empotin@ndf.vsnl.net.in
www.embportindia.co.in

Italy

Viale Liegi, N. 21
00198 Rome, Italy
Tel.: 003 906 844 801
Fax: 003 906 841 74 04
E-mail: embport@embportroma.it
Website: <http://www.embportroma.it/>

Japan

Kamiura-Kojimachi Bldg.
3-10-3, Kojimachi
Chiyoda-ku
Tokyo 102-0083
Japan
Tel: 008 135 212 73 22
Fax: 008 135 226 06 16
E-mail: embportj@zb4.so-net.ne.jp

Kenya

Taifa Road
P.O. Box 34020 - 00100 GPO
Nairobi, Kenya
Tel: 002 542 031 32 03
Fax: 002 542 021 47 11
E-mail: portugalnb@jambo.co.ke

Korea

2nd Floor, Wonseo Bldg.,
171 Wonseo-dong,
Jongro-gu, Seoul #110-280
South Korea
Hours: from 09h00 to 17h00
Tel: 008 223 675 22 53
Fax: 008 223 675 -22 50
E-mail: portcoreia@hotmail.com

Libya

Zaid Bem Thabet
Street Bem Ashur
Libya
Tel: 002 182 136 213 52
Fax: 002 182 136 213 51

Morocco

5, Rue Thami Lamdouar
Souissi - Rabat
Morocco
Tel: 002 123 775 64 46 / 756447 /
756450
Fax: 002 123 775 64 45
E-mail: ambassade.portugal@menara.ma

Mozambique

Av. Julius Nyerere, 730
4696 - Maputo, Mozambique
Tel: 002 582 149 03 16/19/22/24
Fax: 002 582 149 11 72
E-mail: embaixada@embpormaputo.org

Netherlands (The)

Bazarstraat, 21
2518 AG Den Haag
The Netherlands
Tel.: 003 170 363 02 17
Fax: 003 170 361 55 89
E-mail: info@portembassy.nl

Nigeria

27 B Gana Street
Maitama District Abuja
Nigeria
Tel: 002 349 413 72 11
Fax: 002 349 413 72 14

Norway

Josefinesgt 37
0244 Oslo
Norway

Tel: 004 723 332 850
Fax: 004 722 564 355
E-mail: portemb@scosl.dgaccp.pt
Website: www.secomunidades.pt/oslo/

Sao Tome and Principe

Av. Marginal 12 de Julho
C.P. 173
S. Tome
Sao Tome and Principe
Tel: 002 392 211 30
Fax: 002 392 211 90
E-mail: eportp@cstome.net

Senegal

Villa Martha, 6,
Avenue des Ambassadeurs,
Fann Résidence,
B.P. 281 Dakar
Senegal
Tel: 002 23318 645 593
Fax: 002 23318 640 322
E-mail: ambportdakar@sentoo.sn

South Africa

599, Leyds Street
Muckleneuk
Pretoria
South Africa
Tel: 002 712 341 23 40/1/2
Fax: 002 712 341 39 75
E-mail: portemb@global.co.za

Spain

Calle Pinar, 1
28006 Madrid
Spain
Tel.: 003 491 782 49 60
Fax: 003 491 411 01 72
E-mail: embmadrid@emb-portugal.es:
www.embajadaportugal-madrid.org

Sweden

Narvavägen 30-32 - 2°
S-115 22 Stockholm

Sweden
Tel: 004 685 456 70 60
seccaoconsular@embassyportugal.se
Website: www.embassyportugal.se

Switzerland

Weltpoststrasse 20
CH-3015 Bern
Switzerland
Tel: 004 131 352 86 02
Fax: 004 131 351 44 32
E-mail: embpt.berna@scber.dgaccp.pt

Tunisia

2, Rue Sufétula
1002, Tunis-Belvédère
Tunisia
Tel: 002 167 189 39 81 / 788 189
Fax: 002 167 179 10 08
E-mail: ambport@hexabyte.tn

United Kingdom

11, Belgrave Square
London,
SW1X 8PP
Tel: 004 420 723 553 31
Fax: 004 420 723 507 39
E-mail: london@portembassy.co.uk

United States of America

2012 Massachusetts Ave. NW
Washington, D.C. 20036
United States of America
Tel: 001 202 350 54 00
Fax: 001 202 462 37 26
E-mail: info@embassyportugal-us.org

Zimbabwe

12 Harvy Brown Avenue
Milton Park
Harare
Zimbabwe
Tel: 002 634 253 218
Fax: 002 634 253 637
E-mail: embport@harare.dgaccp.pt

Annex III

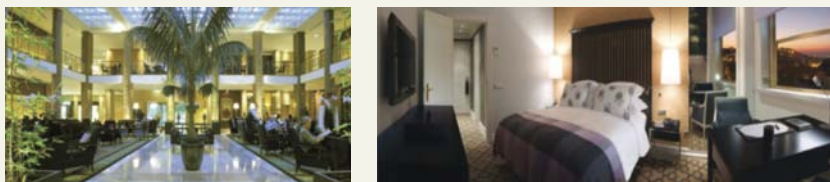
Hotel Description and Accommodation Booking

HOTEL ALTIS LISBOA *****



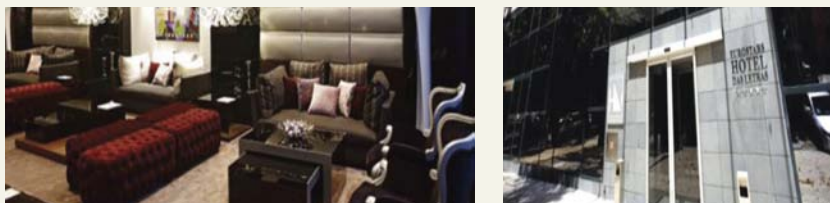
Hotel Altis is located in the city centre, in Lisbon's main business and shopping district. This renovated 5 stars combines the art and tradition of hospitality with all the facilities and services of an international unit. 303 Rooms and suites with panoramic terrace, completely soundproof, comfortably decorated and well equipped, guarantee a comfortable stay. The Hotel offers 2 Restaurants and 2 bars: Grill D. Fernando with panoramic view, and the Coffee Shop Rendez-Vous. A modern Business Centre, equipped with the latest technology, and wireless internet access in all meeting rooms and public areas. To make your stay even more enjoyable, the Altis offers a Health Club, heated Swimming pool, Shopping area, hairdresser, 24 Hours Room Service, Laundry and parking.

HOTEL TIVOLI LISBOA *****



Located on Avenida da Liberdade, right in the heart of Lisbon, this is an elegant 5 star hotel. Renowned for its business meeting facilities for top executives, Tivoli Lisboa continues the tradition of being a well known meeting point in the city. A weekend break in this luxury hotel means you can enjoy a drink in the privacy of the Terraço Bar with a superb view over Lisbon, or take a moment to relax in the Tivoli Caffè. We suggest a visit to our lively Brasserie Flo Lisbon restaurant which satisfies even the most discerning of palates. At the Terraço restaurant enjoy the selection of stylish dishes, accompanied by a unique view over the city of Lisbon.

HOTEL EUROSTARS DAS LETRAS *****



With its literary theme and excellent location in Lisbon's historic centre, the newly-opened Eurostars Das Letras is a popular choice for visitors looking to experience the true essence of the Portuguese capital. Accommodation comprises 107 rooms

(99 doubles, 6 suites and 2 for handicapped guests), all tastefully decorated with quality materials such as walnut wood and black and white marble. Facilities include 24-hour room service, Wi-Fi access, LCD TV in the rooms, restaurant, snack-bar, business area, fitness centre with sauna and private parking.

HOTEL SHERATON LISBOA *****

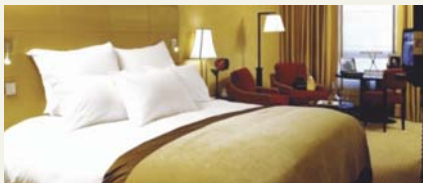


The Sheraton Lisboa Hotel & Spa is located in one of the most privileged business areas of the city, just 15 minutes from Lisbon's International airport and 10 minutes from the city's downtown Baixa district.

The Sheraton is now a brand-new hotel with a trendy look and feel and an extensive list of added features, most notably 369 totally renovated guest-rooms, including 10 junior suites and a sumptuous 155 square-meter presidential suite with private Jacuzzi. All the rooms are equipped with the exclusive Sheraton Sweet Sleeper bed, LCD Bang & Olufsen television, elegant glass bathroom, high-speed Wi-Fi Internet access, individually-controlled air-conditioning, mini-bar and with ironing board. Affording fantastic views over Lisbon, the new and very glamorous top-floor Panorama Restaurant and Panorama Bar is remarkable for its gourmet cuisine, show cooking and impressive glass wine storage area, setting a new standard in the concept of entertainment and high-quality urban gastronomy.

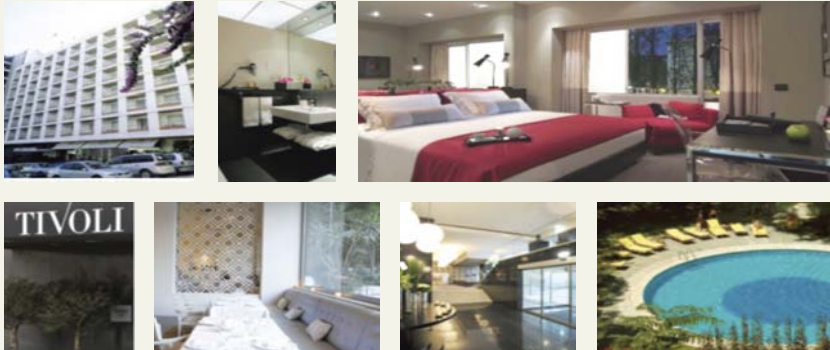
The perfect setting can be found in the hotel lobby where a fresh design and high degree of functionality complement the bar and all-day-dining Lobby Bistro, the ideal place for an informal meeting or business lunch. The new-look Sheraton is fully complete with its ultra-modern Spa centre, covering a total area of 1,500 square meters. Facilities include 10 treatment rooms, a heated outdoor swimming pool, fitness room, Jacuzzi, sauna, chill-out areas and juice bar.

HOTEL SOFITEL LISBOA *****



Situated in the City Center on the fashionable Avenida da Liberdade the Sofitel Lisboa invites you to discover the typical old quarters of Alfama and Bairro Alto with its bohemian flair. The contemporary design of the 167 Deluxe Rooms and 4 Suites combines elegance and sobriety. All rooms are complemented with luxury linens and bathrobe and come equipped with hairdryer, telephone with 2 lines, air-conditioning, satellite TV, Pay TV, WiFi Internet access, minibar and safe-deposit box. Our Ad Lib Restaurant, 24 hour Room Service, Business Centre and Fitness Centre, Intra-Muros Bar, Cigar Lounge and Lobby Library are waiting for you.

HOTEL TIVOLI JARDIM ****



The Tivoli Jardim is a comfortable and classically-styled hotel conveniently situated in a quiet location just off Lisbon's Avenida da Liberdade, in the heart of the city's main business and shopping district. Guests have at their disposal the elegant Mezzanine bar and the high-quality restaurant. Other facilities include a swimming pool with bar serving light meals.

HOTEL FÉNIX LISBOA ****



Recently extended and renovated, the Hotel Fénix Lisboa is located in the noble Praça Marquês de Pombal, the focal point for the most important things happening in the city in terms of leisure, business, culture and shopping. Only 6 km from Lisbon International Airport, the hotel not only has the public transport network at its door, but also the city's most important park, Parque Eduardo VII, and a few yards away, the famous Avenida da Liberdade and the no less famous Rossio, Praça dos Restauradores, Praça do Comércio and the River Tagus. Its new décor, dominated by Portuguese marble and oak, creates a timeless, welcoming atmosphere.

HOTEL FÉNIX URBAN ****



The HF Fénix Urban is centrally located across the street of the main Square Marquês de Pombal and the Eduardo VII Park, this Hotel is a mixture of sophisticated and relaxed ambience offering a big range of quality services and a modern design & decoration.

It is one of the most modern four star hotels in the city with 148 rooms. The HF Fénix Urban fulfils all the requirements you can expect as it is located in the town centre, with several types of rooms, a complete offer of services and facilities, for both the leisure market and the business segment. It's location close in the city centre make the access to the Historical part of town easy by car or walking down the beautiful main Av da Liberdade.

HOTEL LISBOA PLAZA ****



The Lisbon Plaza Hotel possesses a strong character. It was opened at the beginning of the 1950's and still belongs to the same family. The concept of modernity that was idealized by its architect is still present today in the combination of a number of highly practical features, such as the free wireless access in all rooms and public areas and the feeling of informal good taste that is reminiscent of a private home. The Lisbon Plaza Hotel is a unique space for several reasons, including the beauty of its decor, the attention that is paid to the smallest of details and its location right next to the Avenida da Liberdade, right in the historic heart of Lisbon.

HOTEL HERITAGE AV. LIBERDADE ****



Hoteis Heritage Lisboa's latest project is located right on the Avenida da Liberdade - the most emblematic of all the city's main thoroughfares. It is a restored late XVIII century building, the decoration of which was entrusted to Miguel Cândia Martins - a portuguese architect who is renowned for his work on mythical spaces like the Thiu and Buddha Bar in Paris, the Strictly Hush in London and the Man Ray in New York. His design combines the city's own traditions and lifestyle with the most modern technology, such as free wireless access in all rooms and public areas.

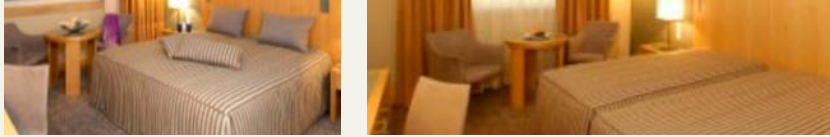
HOTEL SANA LISBOA ****



SANA Lisboa Hotel is located in the city centre, short distance of Marquês de Pombal and Avenida of Liberdade.

The hotel offers 281 rooms and 6 suites. From the sobriety and discreet elegance of the decoration to the design of the chosen pieces, everything was thought to create a comfortable and peaceful atmosphere all rooms are equipped with Cable TV, Direct Telephone with Voice Mail, Internet Connection, Safe, Mini Bar, Air Conditioned and Private Bathroom with Hair-Dryer.

HOTEL SANA MALHOA ****



The SANA Malhoa Hotel is your starting point to explore the Portuguese favourite shopping area. The airport is within a 15 minute drive.

Offering you 181 rooms and 4 suites, the hotel brings together the beauty of the colours and the peacefulness of the several spaces, in a soft atmosphere that adapts perfectly to all occasions. Rooms fully equipped with state of the art facilities, high speed internet, cable TV, movies, and direct dial telephone with voice mail, private safe, mini bar, and individually controlled air conditioning. The Restaurant features superb buffet lunch and dinner à la carte. Live piano music can be enjoyed in the evening. Fitness centre with Sauna, Jacuzzi and Solarium.

HOTEL SANA METROPOLITAN ****



With a strategic location, near Praça de Espanha and the Lisbon City Zoo, only 10 minutes away from “Marquês de Pombal Square” and the Lisbon International Airport the SANA Metropolitan Hotel, totally refurbished, has excellent access to enter or leave the city, to visit the El Corte Inglés Department Store or the biggest shopping centre in Europe: the Centro Comercial Colombo.

With 306 rooms and 9 suites, charm and comfort in an ensemble of atmospheres idealized for your comfort with air-conditioning, direct dial phone, bathroom, satellite TV, minibar and private safe. 200 - place lobby bar and a restaurant seating 170.

HOTEL AÇORES LISBOA ****



Enjoying a privileged location in the heart of Lisbon`s financial district, Hotel Açores Lisboa combines a personalized service with a modern décor of design lines de-

picting the natural splendor of the Azores islands: Fire, Water and Earth are the conducting motifs of the hotel's décor concept and are present in all areas, including the flavorful cuisine. 10 minutes from famous Marquês de Pombal Plaza and from Lisbon International Airport, Hotel Açores Lisboa provides easy access to the historical centre of Lisbon and other interesting surrounding areas. Hotel Açores Lisboa offers you all the essential high quality amenities and impeccable service, whether you are travelling on business or wish to just experience an exceptional comfortable stay.

NOVOTEL LISBOA ****



The 4-star Novotel Lisboa hotel is located in the city of Lisbon, just 109 yards (100 m) from Lisbon Zoo and the Calouste Gulbenkian Foundation. With various public transport facilities close at hand, the historic city center is just 10 minutes away. Totally renovated, it is ideal for family vacations or business trips. The Novotel Lisboa hotel also has a swimming pool, fitness center, restaurant, bar and private garage.

HOTELS AVAILABLE & RATES		
HOTELS	Single Room	Double Room
***** (5 star)		
Corinthia Lisboa	€ 185,00	€ 205,00
Eurostar das Letras	€ 169,00	€ 179,00
Altis Lisboa	€ 145,00	€ 165,00
Tivoli Lisboa (classic)	€ 150,00	€ 160,00
Tivoli Lisboa (collection)	€ 190,00	€ 200,00
Sofitel Lisboa	€ 155,00	€ 170,00
Sheraton Lisboa	€ 160,00	€ 180,00
**** (4 star)		
Tivoli Jardim	€ 130,00	€ 140,00
Fenix Lisboa	€ 89,00	€ 100,00
Fenix Urban	€ 76,00	€ 87,00
Lisboa Plaza	€ 147,00	€ 162,00
Heritage Av. Liberdade	€ 191,00	€ 211,00
Sana Lisboa	€ 105,00	€ 115,00
Sana Malhoa	€ 90,00	€ 100,00
Sana Metropolitan	€ 80,00	€ 90,00
Açores Lisboa	€ 74,00	€ 83,00
Novotel Lisboa	€ 79,00	€ 89,00

HOTEL RESERVATIONS WILL BE MADE WITH THE ASSISTANCE OF THE RESERVATION AGENCY VEGA

PAYMENT

Credit Card – VEGA accepts Visa, MasterCard and American Express cards
 Extra charge – VEGA need to charge 3,5% over the total amount to pay Credit Card expenses.

FOR PAYMENT BY BANK WIRE, please see the bank details:

IBAN PT50000700210016998000933

SWIFT CODE: BESCPTPL

(Please make sure you identify your payment)

With the confirmation of your Hotel stay, VEGA will issue an automatic receipt confirming the payment.

Booking forms are available at www.afdb.org/AM

Please fax the booking form back to + 351 213 976 058 or by email to bad@vega.pt

For additional questions please contact VEGA on + 351 213 976 053

DEADLINES

Cancellations received	% Refund
up to 30th April 2011	100% refund
as from 1st May 2011	No refund

Annex IV

List of Restaurants in Lisbon

RESTAURANT	ADDRESS	TEL
Restaurante Bota Alta	Travessa Queimada 35/7, 1200-364 Lisbon	+351 213 427 959
Mercado do Peixe	Estrada de Pedro Teixeira 1400-047 Lisbon	+351 213 616 070
D'Avis	Rua do Grilo 96/8, 1950-146 Lisbon	+351 218 681 354
Isaura	Avenida de Paris, 4B 1000-228 Lisbon	+351 218 480 838
Paris	Rua dos Sapateiros, 126 1100-580 Lisbon	+351 213 469 797
Sua Excelência	Rua do Conde 38, 1200-637 Lisbon	+ 351 213 903 614
Tasquinha D'Adelaide	Rua do Patrocinio 72/4, 1350-231 Lisbon	+351 213 962 239
Adega Tia Matilde	Rua da Beneficência 77, 1600-017 Lisbon	+351 217 972 172
O Madeirense	Rua Tierno Galvan - Amoreiras Shopping Centre 1070-274 Lisbon	+351 213 813 140
Casa do Alentejo	Rua das Portas de Santo Antão, 58 1150-268 Lisbon	+351 213 469 231

Most restaurants take reservations, and it is recommended that you make a booking as the Portuguese love to eat out.

Annex V

Hospital & Special Assistance for Emergencies in Lisbon

HOSPITAL	ADDRESS	TEL
Hospital Dona Estefânia	Rua Jacinta Marto 1169-045 Lisbon	+351 213 126 600
Hospital Egas Moniz	Rua da Junqueira, 126 1349-019 Lisbon	+351 213 650 000
Hospital Santa Maria	Avenida Professor Egas Moniz 1649-035 Lisbon	+351 217 932 762
Hospital São Francisco Xavier	Estrada do Forte do Alto do Duque 1495-005 Lisbon	+351 213 017 351
Hospital São José	Rua José António Serrano 1150-199 Lisbon	+351 218 841 540
Hospital São Luís	R. Luz Soriano 182, 1200-249 Lisbon	+351 213 216 5 00
Cuf Descobertas (Private)	R. Mário Botas, 1998-018 Lisbon	+351 210 025 200
Hospital da Luz (Private)	Av. Lusíada, 100, 1500-650 Lisbon	+351 217 104 400
Hospital dos Lusíadas (Private)	Av. Lusíada, 1500-400 Lisbon	+351 217 704 040
Cruz Vermelha Portuguesa (Private)	R. Duarte Galvão 54	+351 217 714 000

Annex VI

Emergency Calls in Lisbon

Emergency	112
-----------	-----





www.afdb.org