



Indian Railways



Welcomes

Dr. Donald Kaberuka
President, AfDB
And all delegates of
AfDB

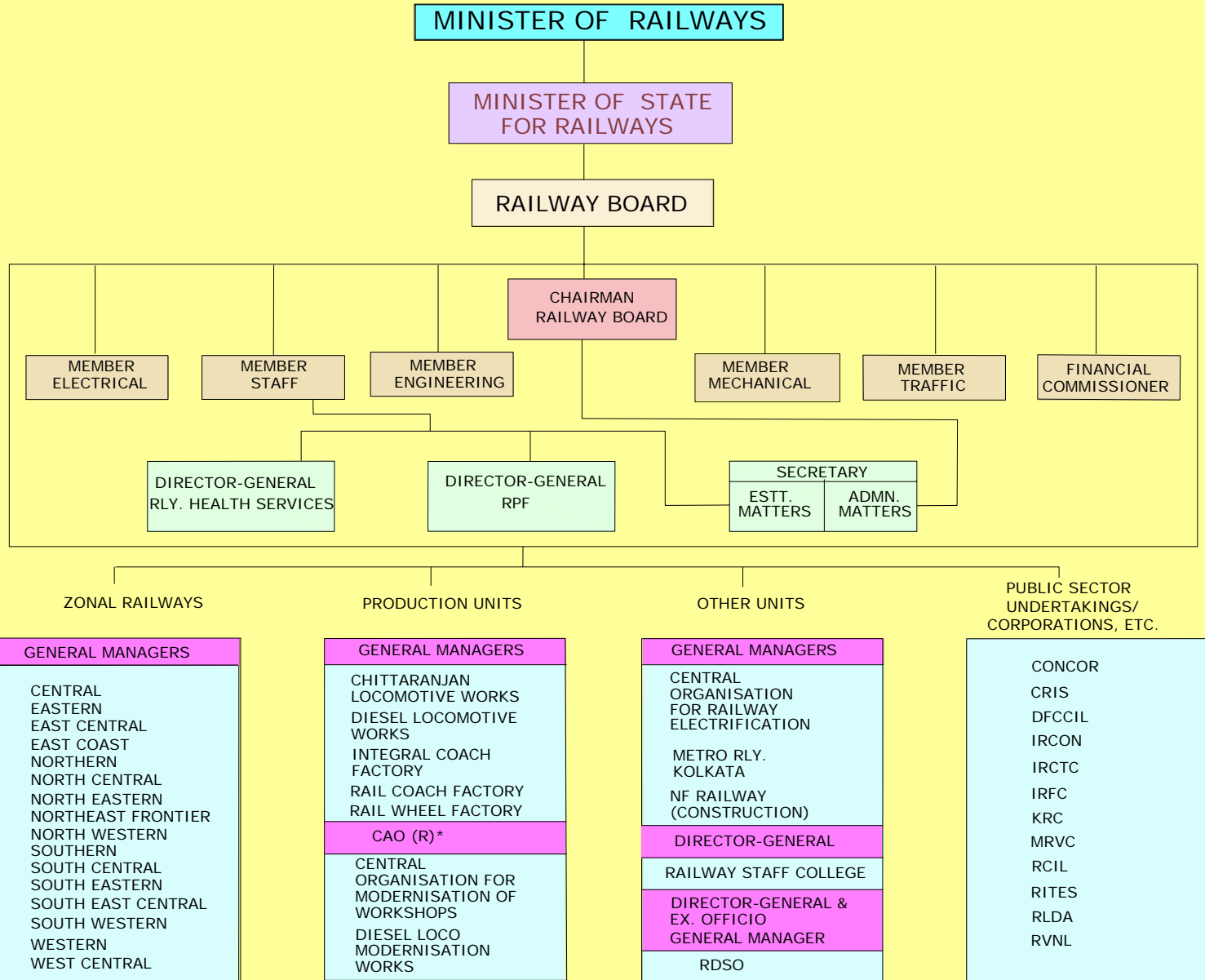


Outline



- Organisational Structure
- Salient Features
- International Comparison
- Cooperation with Africa

ORGANISATIONAL STRUCTURE



* Chief Administration Officer (Railways)



Salient Features

- A 156 years old organisation that is nation's lifeline carrying 40%* of freight traffic of the country
- Carried 833 mt of freight traffic and transported about 7 billion originating passengers in 2008-09 (provisional)
- Ran 17754 trains per day including 10385 passenger trains in 2008-09
- Carried 66% of all coal, 73% all fertilizers, 64% of all iron-ore, 45% of all cement, 21% of all POL and 20% of all foodgrains transported in the country (2006-07)

Source: Dte of Eco & Stats., Railway Board Dtes., *As per Total systems study carried out by RITES



Salient Features (as on 31.3.2008)

- Network of 63,273 Route Km with multiple gauges
- Pre-dominantly Broad gauge (1676mm); Broad Gauge 81%, Metre Gauge 15%, and Narrow Gauge 4%
- 18273 Electrified Route Km(29% of total route km)
- 7025 Stations, 8330 Locomotives, 204034 wagons & 47373 passenger cars including EMU's
- 1.39 million employees with 16131 officers including doctors



Salient Features

- Two coach factories viz., Integral Coach Factory, Perambur and Rail Coach Factory, Kapurthala that produced 1337 and 1558 coaches respectively in 2008-09.
- Two locomotive factories viz., Diesel Locomotive Works, Varanasi and Chittaranjan Locomotive Works, Chittaranjan that produced 257 diesel and 220 electric locomotives respectively in 2008-09
- Rail Wheel Factory, Yelahanka produced 196261 wheel discs and 84428 axles in 2008-09 while in the same period Diesel Loco Modernisation Workshop, Patiala rebuilt 108 locomotives



Computerisation



Passenger Reservation System

	No. of Locations	No. of Terminals	No. of Terminals being added
Passenger Reservation System	1774	6872	300
Unreserved Ticketing System	2075	5319	2800

Caters to more than 1 million people per day on a real-time basis. (34 million in a month)



Computerisation



Freight Management (Freight Operating Information System)

	No. of Locations	No. of Terminals	No. of Terminals being added
Rake Management System	246	246	-
Terminal Management System	523	523	852
Crew Management System	220	220	-
Parcel Management System	10	77	200



Railways' Revenues and Expenditures at a glance



(Million US\$)

Revenues			Expenditure		
	2008-09 (RE)	2009-10(BE)		2008-09 (RE)	2009-10(BE)
Coaching	4751.06	5319.15	Ordinary Working Expenses	11702.13	13382.98
Other Coaching	514.89	638.30	Appro. To Pension Fund	2231.91	2912.77
Goods	11551.70	12565.74	Appr.To DRF	1489.36	1489.36
Sundry	691.49	1276.60	Misc. Expenditure	143.97	178.67
Suspense	21.28	21.28	Total Expenditure	15567.38	17963.77
Misc. Receipts	391.53	456.86	Net Revenue	2354.58	2314.14
Total Receipts	17921.95	20277.92	Dividend payable to General Revenue	1002.33	1128.56
Surplus and Operating Ratio					
Surplus	2008-09 (RE)	2009-10(BE)	Operating Ratio	2008-09 (RE)	2009-10(BE)
	1352.25	1185.59		88.3%	89.9%

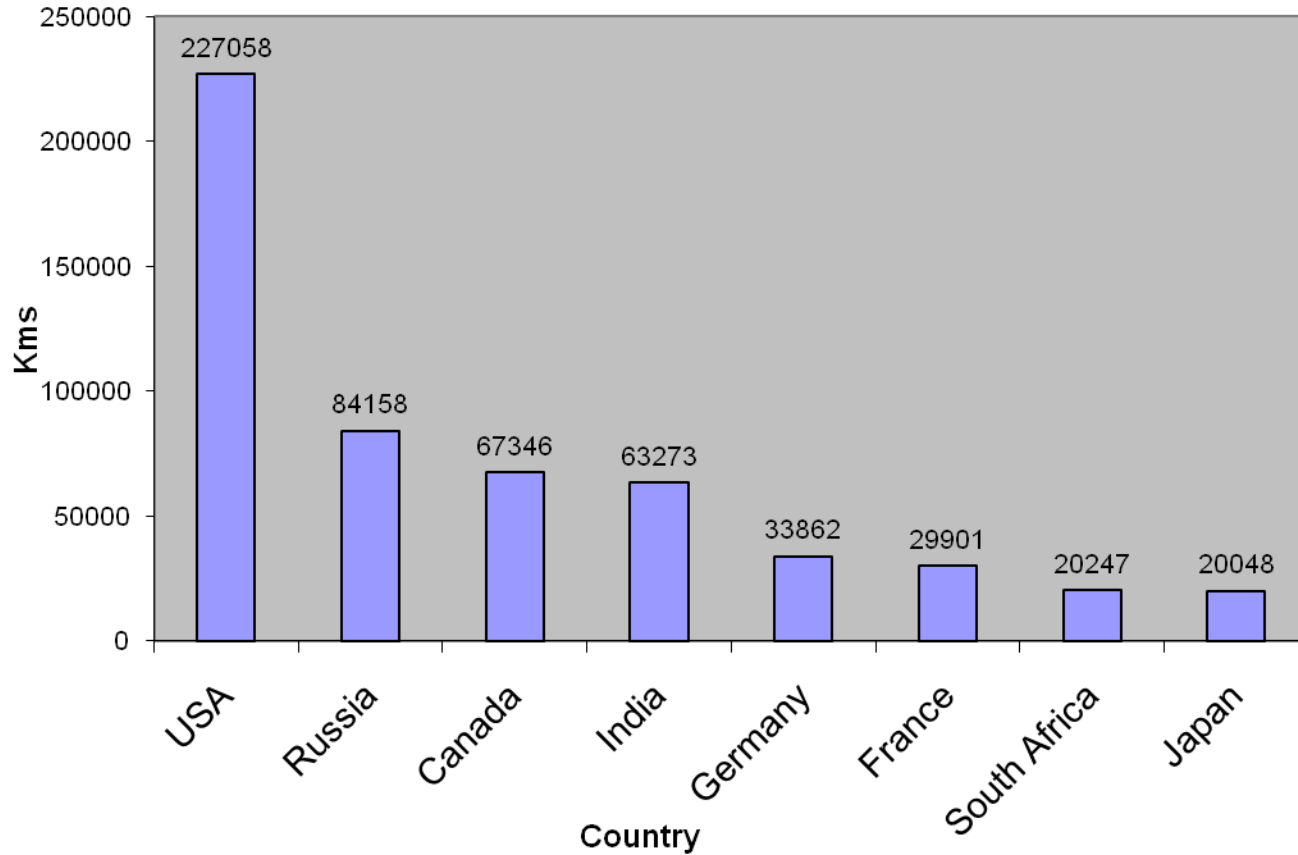


सत्यमेव जयते

International Comparisons



Route Length (Kilometers)

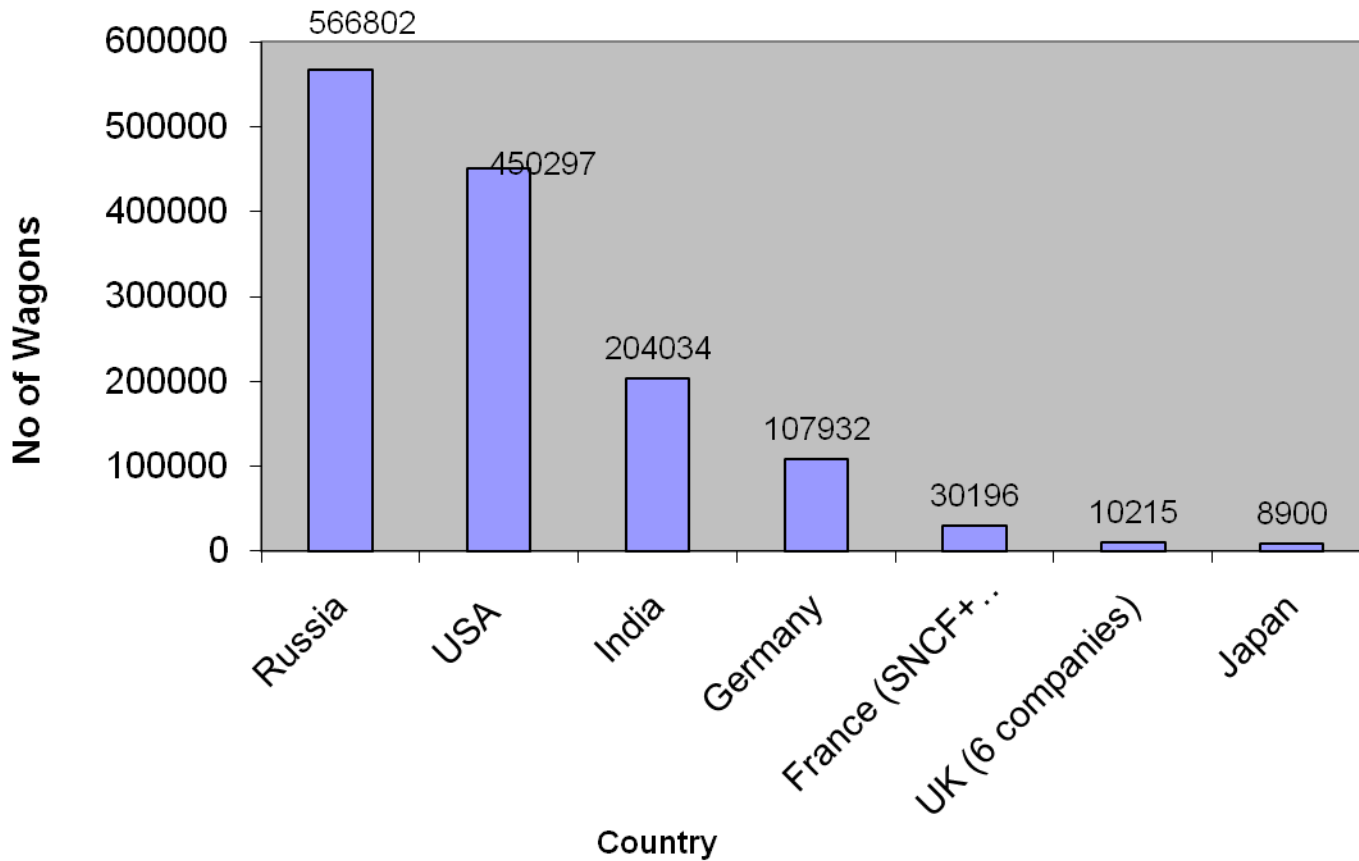




International Comparisons



Fleet of Wagons

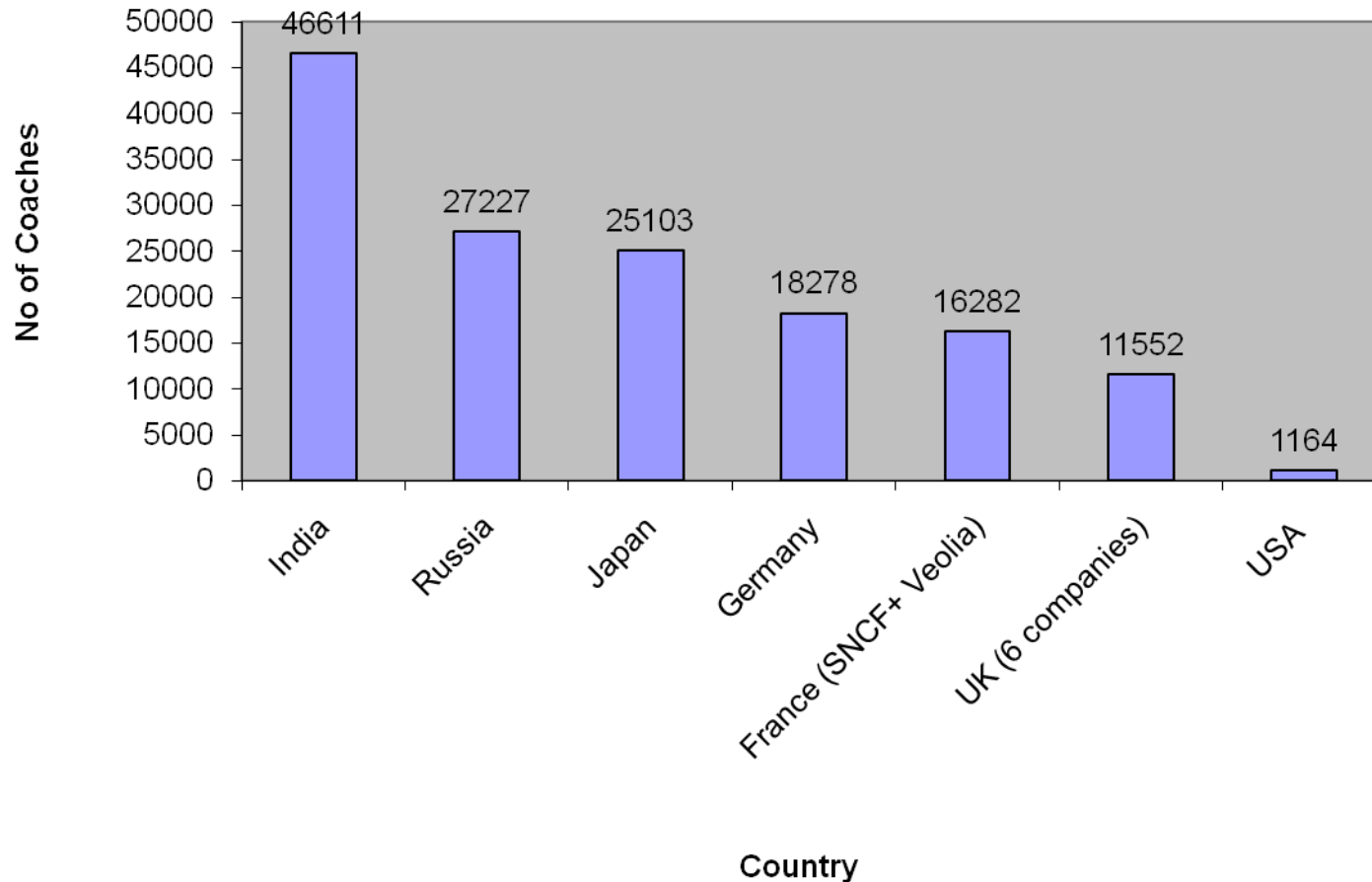




International Comparisons



Coaches

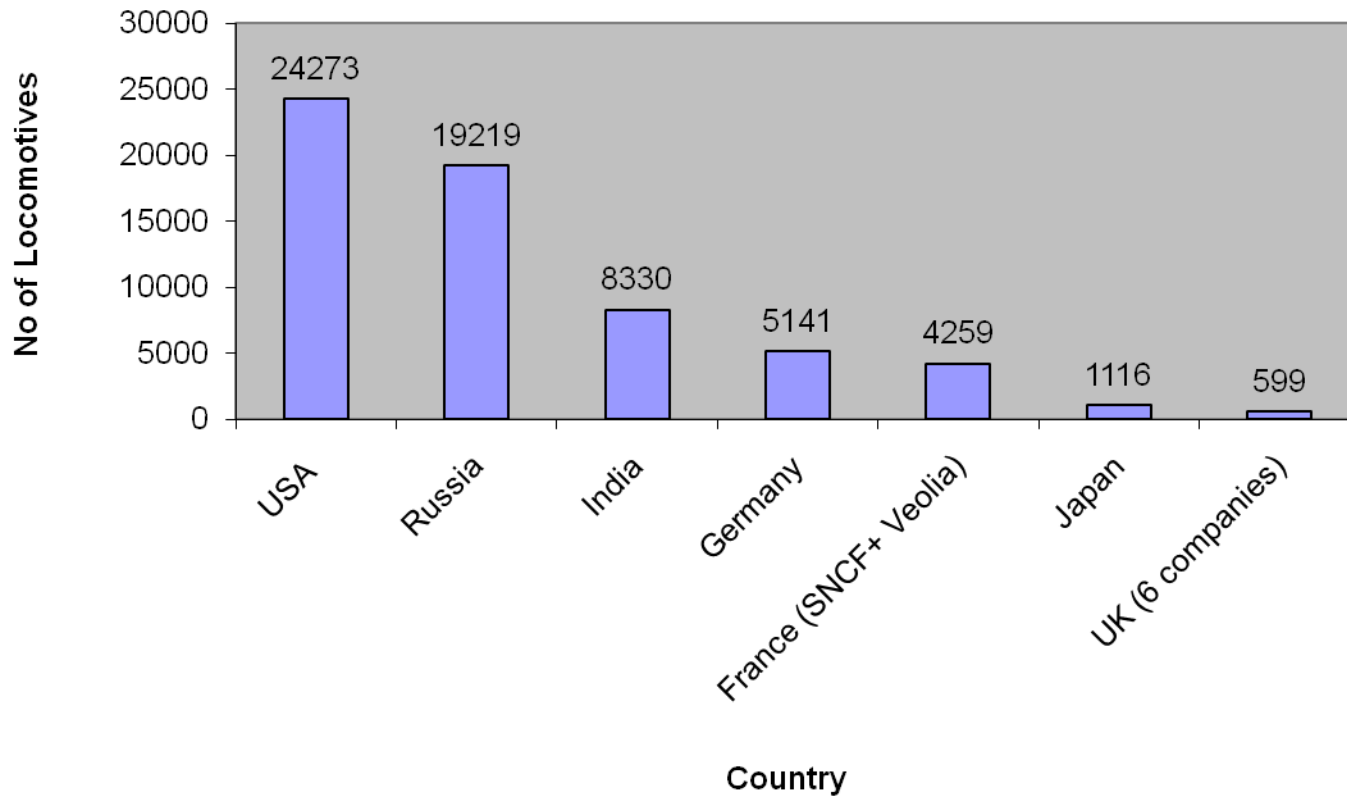




International Comparisons



Locomotives

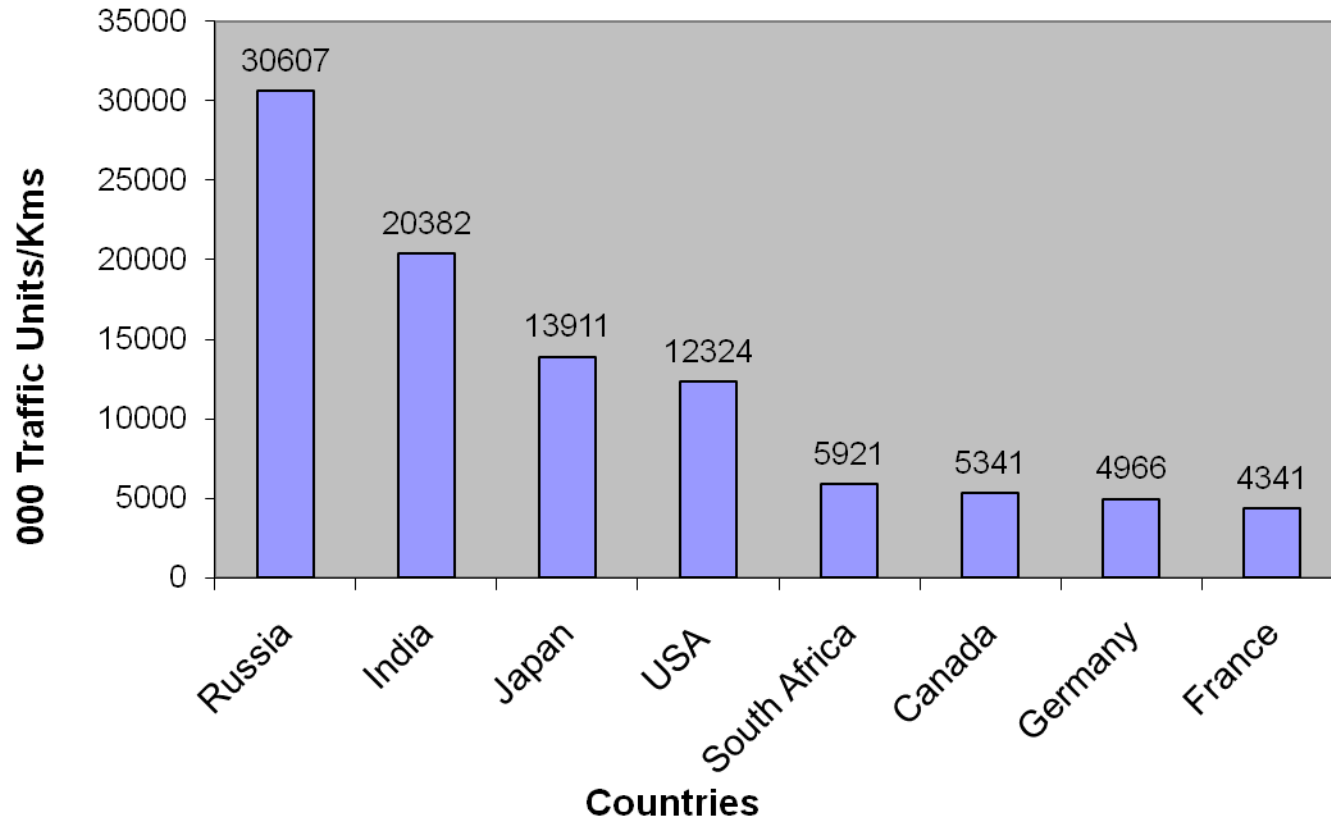




International Comparisons



Traffic Density



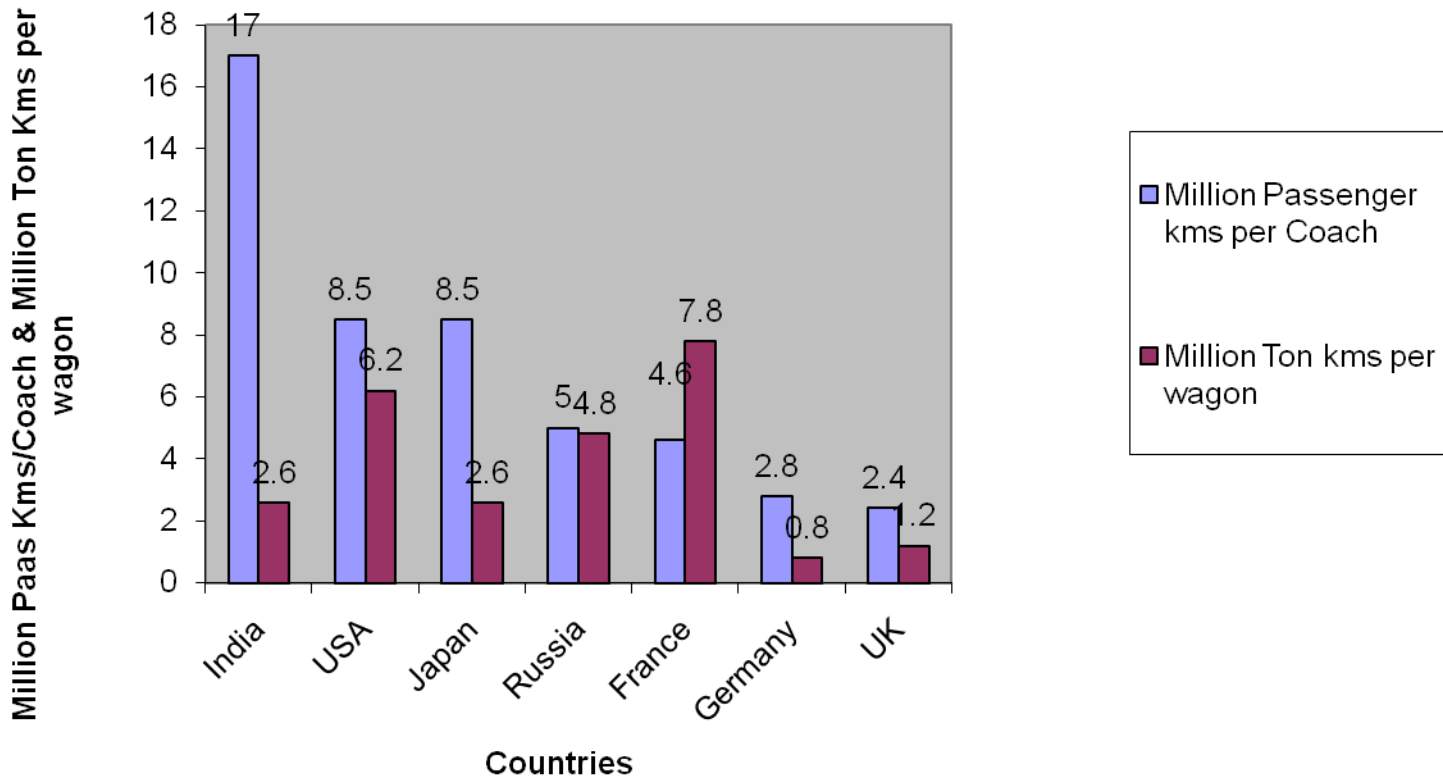
Traffic Density Unit = (Passenger kms + Feight Tons kms)/Route Kms



International Comparisons



Asset Utilisation



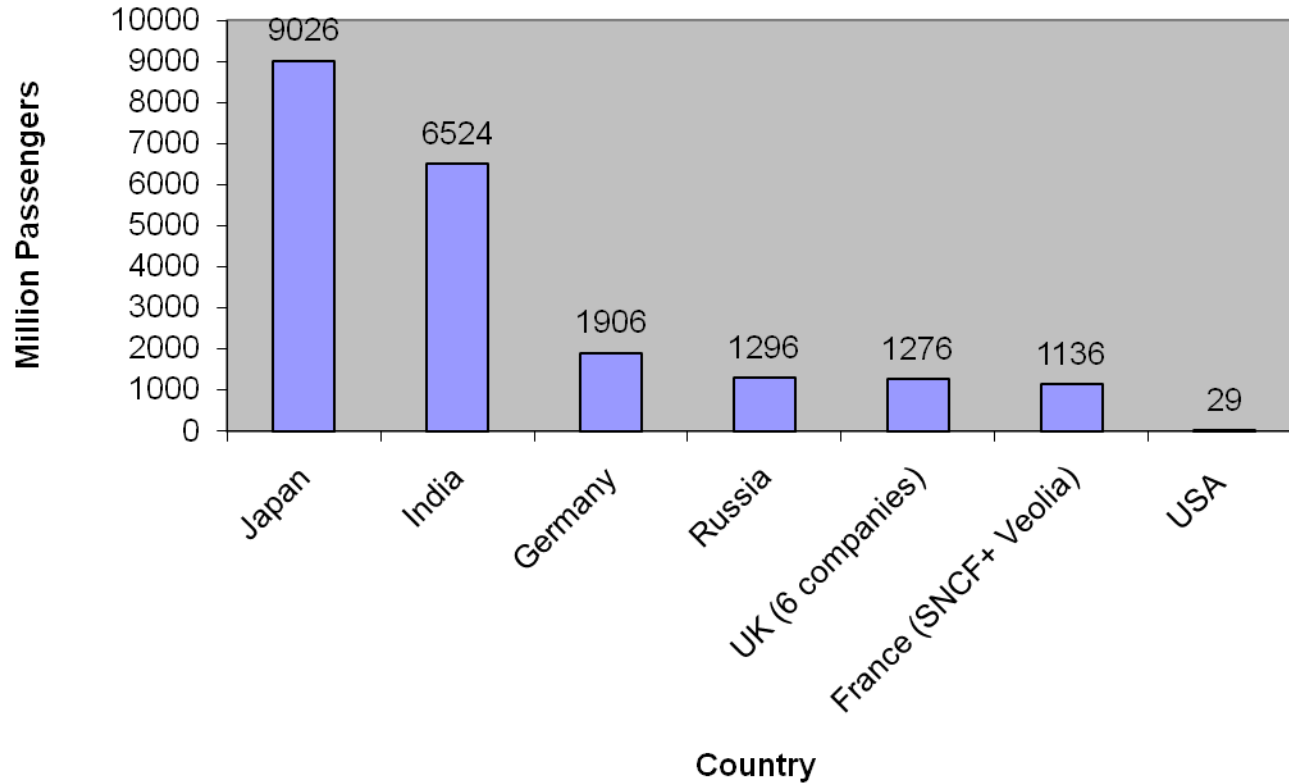


सत्यमेव जयते

International Comparisons



Passengers Carried (Millions)

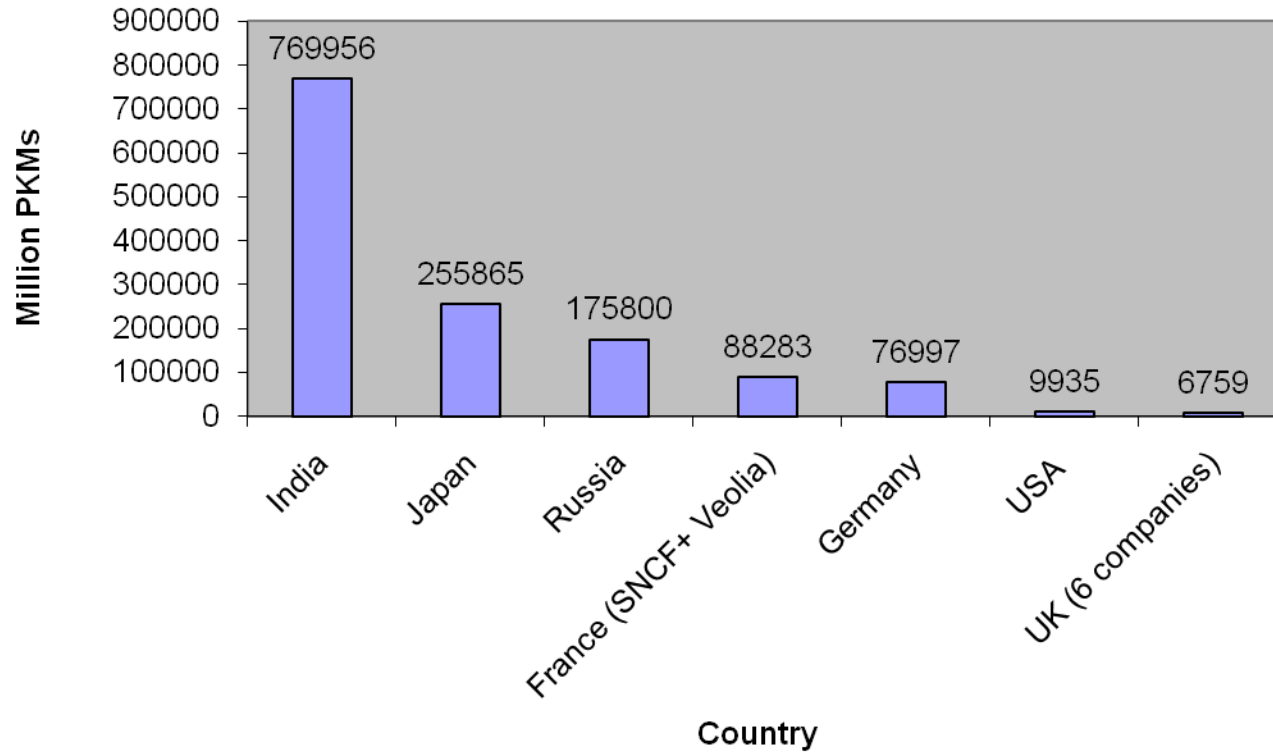




International Comparisons



PKMs (Millions)

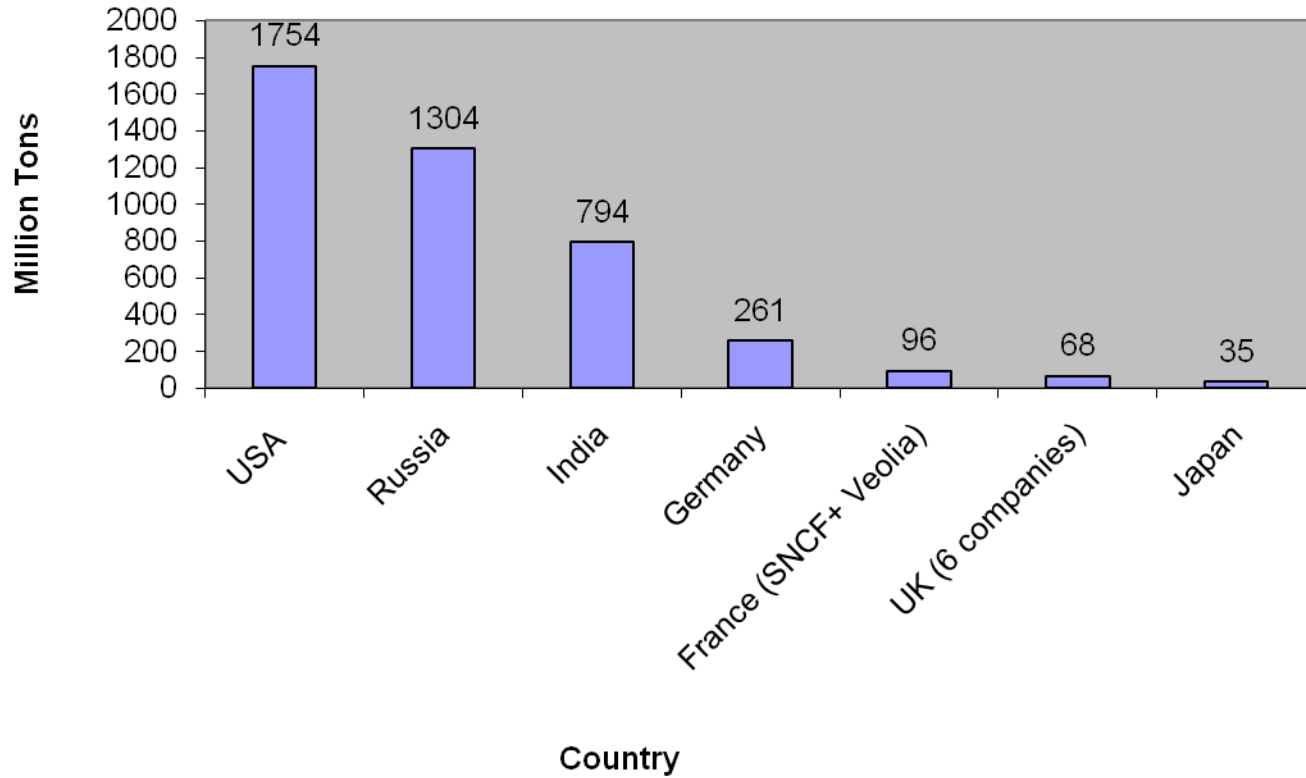




International Comparisons



Freight Carried (Million Tons)





Cooperation with Africa



rites & IRCON IN AFRICA

SECTORS

- ✓ Railways
- ✓ Roads & Highways
- ✓ Airports
- ✓ Urban Transport
- ✓ Ports & Harbours
- ✓ Training & Human Resource Development

COUNTRIES

Algeria	Egypt
Angola	Ethiopia
Botswana	Ghana
Burkina Faso	Kenya
Cameroon	Malawi
Djibouti	Mozambique
Namibia	Tunisia
Nigeria	Uganda
Sudan	Zambia
Swaziland	Zimbabwe
Tanzania	Togo
Liberia	





Cooperation with Africa



SOME OF THE ONGOING AND COMPLETED PROJECTS

RITES

- ✓ Concessioneering of Beira Rail Corridor, Mozambique - Operation and Management
- ✓ Supply of Locomotives to Benin, CDN Mozambique
- ✓ Concessioneering of Tanzania Rail Corporation, Tanzania - Operation and Management
- ✓ Supply of Diesel Multiple Units, Locos & Coaches and Workshop Modernization for Angola Railways.
- ✓ Leasing of 25 locomotives to Tanzania
- ✓ Wagon rehabilitation for Tanzania Railways.
- ✓ Supply of Locomotives and passenger coaches to Senegal and Mali
- ✓ Construction Supervision for Makenajo-Nejo- Mendi Road & Nazareth-Assela Road - Ethiopia
- ✓ Kampala Urban Traffic Improvement Plan – Uganda
- ✓ Design, upgradation and construction management of Francistown and Selibe-Phikwe airports in Botswana

IRCON

- ✓ Mozambique-Rehabilitation of 650 Km of Railway Track including rehabilitation of bridges of Sena Line in the Central Part of Mozambique and Rehabilitation of 4 Kms. Of Dona Ana Bridge – 80 Million USD
- ✓ Algeria -Construction of Railway line for Saida Cement Plant (1983-85);,Construction of a new Railway line at Benisef, Algeria, (1985-88): Double track line between Oued-Sly and Yellel of Algeirs and Oran Line
- ✓ Zambia -Radio based CTC and Axle Counter Block covering 850 KM 1988-90
- ✓ Nigeria -Interlocking equipment for level crossings
- ✓ Ethiopia - Construction of 99.20 Kms of Dera-Mechara Road: Procurement of Sub-station equipment and supervision of work: Procurement of equipment for extension of 8 Sub-station and supervision of work
- ✓ Liberia -Survey work and preparation of DPR for rehabilitation of railway line from Buchanan to Yekepa (2007)



Cooperation with Africa



Areas of Possible Co-operation with AfDB

- ✓ Pre-feasibility/feasibility studies and detailed project reports for interlinking various railway systems
- ✓ Establishment of Regional Railway Workshops at various hubs (e.g. Ghana) for maintenance of rolling stock
- ✓ Financing of acquisition/leasing of locomotives and rolling stock
- ✓ Implementation of 10 year Training program for Railway Personnel of different countries
- ✓ Turnkey solution for Railway Rehabilitation and New lines
- ✓ Highway and Expressway Construction
- ✓ Sub-station & Transmission Lines
- ✓ Building and Townships
- ✓ Other Infrastructure works



Cooperation with Africa



SOME OPPORTUNITIES

Pre-feasibility/Feasibility Studies which can be undertaken by RITES

- ANGOLA -** Feasibility study for inter-linking CFL, CFB and CFM Railways. (Luanda, Beneguela, Mozambique)
- BENIN -** Segbhoue-Anecho rail link between Benin and Togo. Parakou-Niamey rail link between Benin and Niger.
- BURKINA FASO -** Kaya-Niamey rail link between Burkina Faso and Niger: Dori-Ansongo rail link between Burkina Faso and Mali.
- COTE D'IVOIRE -** Ouagadougou-Bamako rail link between Cote d'Ivoire and Mali.

EAST AFRICAN COUNTRIES (EAC) –

Review and update for East African Railway Master Plan for Arusha-Musoma-Port Bell railway project, Mombasa-Nairobi railway and Tanga-Moshi railway. Financing feasibility study for rehabilitation of Himo-Voi segment of the railway that links Tanzania, Uganda and Kenya.

- GHANA -** Rehabilitation of existing Accra/Tema-Kumashi rail link & extension of this line to Tamale through Yendi: Accra-Lome rail link between Ghana and Togo. Accra-Abidjan rail link between Ghana and Cote d'Ivoire.
- GUINEA -** New rail link from Kankan to Bamako: Rehabilitation of Conakry-Kankan rail link.
- NIGERIA -** Idogo-Pobe rail link between Nigeria to Benin.



Cooperation with Africa



SOME OPPORTUNITIES

Projects that can be undertaken by IRCON

Sudan - Discussion in progress for two projects (i) Khartoum to Al-Masalamian & (ii) Al-Masalamian to Sennar – Cost USD 300 Million. Available LOC from Govt. of India- 150 Million USD

Botswana - EOI submitted for “Construction of 1500 Kms trans Kalahari Railway” in July’09

Nigeria - Proposal submitted in 2000 regarding rehabilitation of various lines, New line to Abuja and East-West corridor appx. Expenditure to be USD 500 Million to 2.5 Billion: Supply/lease for DMU and Loco – 50 Million USD

Ghana - Rehabilitation of Eastern Line – 304 KM.

Senegal - 20 KM Track for phosphate line, Third line near Dakar, Rehabilitation of track, New Line for transportation of Iron Ore to Port of Dakar

Namibia - Rehabilitation and up-gradation of railway in Namibia.



THANK YOU

Mukund Kumar Sinha