

SUBJECT: LIBERIA: PROPOSAL FOR A GRANT OF US\$ 630,000 FOR EMERGENCY ASSISTANCE FOR HUMANITARIAN RELIEF AT THE LIBERIA-COTE D'IVOIRE BORDER*

Table of Contents

Acronyms	ii
Project Simplified Logical Framework	iii
1. BACKGROUND AND JUSTIFICATION FOR EMERGENCY ASSISTANCE.....	1
1.1 Background – The Humanitarian Crisis at the Liberia-Cote d’Ivoire Border	1
1.2 Justification for Emergency Assistance.....	1
2. OVERVIEW OF THE APPEAL FOR EMERGENCY ASSISTANCE	2
2.1 The International Appeal	2
2.2 UNHCR and the Liberia Refugee Repatriation and Resettlement Commission	2
3. THE PROPOSED EMERGENCY ASSISTANCE OPERATION	3
3.1 Objectives and Description of the Emergency Assistance	3
3.2 Cost and Source of Finance	4
3.3 Implementation Arrangements and Schedule.....	4
3.4 Procurement and Disbursement Arrangements	4
3.5 Reporting, Supervision and Auditing	5
4. CONCLUSIONS, RECOMMENDATIONS AND CONDITIONS FOR DISBURSE- MENT	5
4.1 Conclusions and Recommendations	5
4.2 Conditions for Disbursement.....	5

List of Annexes

Annex 1	Map of Affected Area and Statistics on Refugees
Annex 2	Activities and Budget; Benefitting Communities, Refugees and Gender Distribution
Annex 3	UNHCR’s and LRRRC’s operational structure
Annex 4	Implementation Schedule
Annex 5	Request from the Government of Liberia for Emergency Assistance
Annex 6	UN Appeal to the International Community for Emergency Assistance to Liberia

Task Team

Stefan MULLER (Chief Country Economist and Task Manager/ORWB), Samuel ONWONA (Resident Representative/SLFO), Cecil NARTEY (CPO/SLFO), Sheikh SESAY (Macroeconomist/SLFO), Sandy JAMBAWAI (Social Expert/SLFO), Neila CONTE (Regional Chief Procurement Coordinator/ORPF-SNFO), Basil JONES (Principal Capacity Building Expert/OSFU), Brenda ALUOCH (Principal Legal Counsel/GECL.1), Abayomi AYODABO (Chief Financial Accountant/FFCO.1), Josephine MWANGI (Division Manager/OSAN.3), Alex MEND (Principal Agronomist/OSAN.1).

Acronyms

ADB	African Development Bank
CAP	Consolidated Appeal Process
EHAP	Emergency Humanitarian Action Plan
GoL	Government of Liberia
IOM	International Organization on Migration
LoA	Letter of Agreement
LRRRC	Liberia Refugee Repatriation and Resettlement Commission
MT	Metric Tons
NGO	Non-governmental Organization
OCHA	United Nations Office for the Coordination of Humanitarian Affairs
PPE	Personal Protective Equipment
SRF	Special Relief Fund
UNICEF	United Nations Children Fund
UNHCR	United Nations High Commissioner for Displaced Persons
WFP	World Food Program
WHO	World Health Organization

Project Simplified Logical Framework

Country and Project Name:		Liberia – Proposal for a grant of US\$ 630,000 as emergency assistance for humanitarian relief at the Liberia-Cote d’Ivoire border				
Project Purpose:		Strengthen the efforts by the UNHCR/LRRRC to meet the urgent requirements of the displaced people at the Liberia-Cote d’Ivoire border				
RESULTS CHAIN		PERFORMANCE INDICATORS			MEANS OF VERIFICATION	RISKS/MITIGATION MEASURES
		Indicator	Baseline	Target		
IMPACT	Social peace is preserved and human suffering reduced in the affected regions/counties along the Liberia-Cote d’Ivoire.	General human well-being of refugees and host communities population.		General human well-being of refugees and host communities is improved.	The general human well-being of refugees and host communities targeted by the Bank’s emergency assistance is properly documented.	Risk: The number and influx of refugees might further increase to levels that would make it difficult to improve the general human well-being of refugees and host communities. Mitigation: The Bank’s emergency assistance is part of a wider international effort which is expected to be scaled-up to meet the humanitarian requirements of refugees and host communities.
OUTCOMES	Minimum humanitarian requirements of refugees and host community population in terms of shelter, health care and water and sanitation are met at the Liberia-Cote d’Ivoire border.	Number of refugees and host community population benefitting from the Bank’s emergency assistance.	0	Around 30,000 beneficiaries in 3 communities and 1 refugee camp in Nimba county.	The use of the emergency assistance grant and the number of beneficiaries are properly documented in a report to be produced by UNHCR/LRRRC. The report will specify how the minimum requirements have been met.	Risk: The number and influx of refugees might further increase to levels that would make it difficult to meet the minimum requirements of refugees and host community population in terms of shelter, health care and water and sanitation. Mitigation: same as above.
OUTPUTS	<p>Component 1: Infrastructure Reinforcement.</p> <p>Component 2: Sheltering of Refugees.</p> <p>Component 3: Health Care Response.</p> <p>Component 4: Child Nutrition and Immunization.</p> <p>Component 5: Water and Sanitation Services.</p>	<p>Reinforced bridges and improved feeder roads.</p> <p>Shelters constructed for refugees.</p> <p>Key medical equipment/supplies provided.</p> <p>Children vaccinated and fed.</p> <p>Water and sanitation facilities provided.</p>		<p>- 31 log bridges - 61.25 km</p> <p>- 340 shelters for 1,700 persons</p> <p>- 15 health staff - 17,000 misc. medic. units for 8,000 persons</p> <p>- 2 immunization awareness campaigns and 2 nutritional surveys covering 10,000 children - 20 units of nutritional and immunization items for 10,000 children</p> <p>- Misc. equipment/materials for 5,000 persons</p>	Report produced by UNHCR/ LRRRC	Risk: The forthcoming rainy season might make the implementation of works and transport/provision of emergency aid difficult, thereby generating delays. Mitigation: UNHCR/LRRRC liaise with UNMIL to get heavy machinery.
KEY ACTIVITIES	<p>Emergency Assistance Components: Component 1: Infrastructure Reinforcement Component 2: Sheltering of Refugees Component 3: Health Care Response Component 4: Child Nutrition and Immunization Component 5: Water and Sanitation Services</p> <p>Project Implementation/Administrative Components: Component 6: Project Monitoring, Supervision and Reporting Component 7: UNHCR Administrative Fee</p>				<p>INPUTS: Component 1: US\$ 77,500 Component 2: US\$ 85,000 Component 3: US\$ 145,000 Component 4: US\$ 78,400 Component 5: US\$ 165,000</p> <p>Component 6: US\$ 35,000 Component 7: US\$ 44,100 Total: US\$ 630,000</p>	

1. BACKGROUND AND JUSTIFICATION FOR EMERGENCY ASSISTANCE

1.1 Background – The Humanitarian Crisis at the Liberia-Cote d’Ivoire Border

1.1.1 In the West African country of Cote d’Ivoire, a political deadlock following last year’s Presidential elections has pushed the country into an internal conflict, resulting in hundreds of casualties and a mass exodus of people fleeing the violence and bloodshed. Cote d’Ivoire has been in turmoil since the second round of Presidential elections of 28 November 2010, with supporters of incumbent president Laurent Gbagbo and internationally accepted winner of the polls Alassane Ouattara clashing and violence spreading throughout the country. A majority of the people are fleeing into eastern and south-eastern Liberia, which shares a border with Cote d’Ivoire.

1.1.2 The population movements, which started immediately after the elections, ranged between 100-150 people per day. However, following a sudden upsurge in fighting in Cote d’Ivoire on 24 February 2011, the number of civilians fleeing into Liberia has seen an alarming increase, with more than 53,000 people crossing over in a matter of days. The influx added to the existing registered refugee caseload of almost 40,000 people prior to 24 February. According to the latest available UNHCR data of 27 March 2011, the total number of refugees stood at more than 111,000 people. This is putting a severe strain on the host communities in Nimba, Grand-Gedeh and other remote, hard-to-access counties located along the border in Liberia, where the local population already lives below the poverty line, suffering from neglect by the State and under-developed infrastructure weakened by many years of civil war (see annex 1 for a map of the affected area as well as details on the number of refugees and their spatial distribution).

1.1.3 The international humanitarian community is expecting a total of 150,000 refugees by the end of June 2011 in need for emergency assistance. Critical needs include food, health care services, shelter, registration, water and sanitation/hygiene, as the refugee influx is putting a massive burden on the already depleted facilities and services along the border. It is also essential to improve the poor infrastructure in these areas such as dilapidated access roads and bridges, to ensure the timely and uninterrupted delivery of humanitarian emergency aid. However, humanitarian agencies overall in Liberia are struggling with limited resources and capacity available because funding has been so limited. US\$ 35 million in funding has been received or committed to date, leaving US\$ 111 million still required (chapter 2 below provides details on the requirements and funding of the Liberia Emergency Humanitarian Action Plan, EHAP, 2011). The support of the international community is therefore imperative to meet the immediate, essential protection and assistance needs of refugees, many of whom have already experienced difficult conditions in their country of origin.

1.2 Justification for Emergency Assistance

1.2.1 The purpose of the present Proposal is to provide a direct and immediate response to the humanitarian crisis in support of on-going efforts by the Government of Liberia (GoL) and the international community. The current emergency situation is beyond the capacity of the State and its agencies to handle without significant support from the international community as Liberia is still recovering from a protracted period of civil war that resulted in the destruction of its socio-economic infrastructure and a persisting lack of government capacity to effectively and efficiently provide basic services to the Liberian population. It is also important to note that the current humanitarian crisis is exacerbated by an ongoing fuel and food crisis that hit the country due to drought and poor weather patterns. As a matter of fact, Liberia’s current domestic production of its main staple food rice is estimated at about 150,000mt/year, as opposed to a requirement of about 350,000mt. Following the current humanitarian crisis, the price of rice has skyrocketed in Nimba County by 180% over the last three months as a direct consequence of the demand-push by Ivorian refugees.

1.2.2 The Proposal is justified because of the risk of further deterioration of the humanitarian situation along the Liberia-Cote d’Ivoire border. Persons taking refuge in Liberia do not only include Ivorian citizens, but also third-country nationals as well as Liberian returnees. The sheer amount of refugees arriving in Liberia’s border areas with Cote d’Ivoire cannot be absorbed by local

communities¹, the latter of which already have very little to survive on. The large proportion of refugees remaining in host communities in proximity to the border also poses a significant security risk for which reason the government and its humanitarian partner agencies have decided to relocate a significant share of the refugees into the interior, taking into account the internationally recommended standard distance of 50 km. Camps are being set-up to provide refugees with basic social services. Both local communities and refugee camps are in dire need of clean water, shelter, food, health, protection, sanitation, education and security, which the State and its agencies with their limited financial and administrative capacity alone are not able to provide².

1.2.3 Furthermore, the Proposal is justified because the activities proposed under it can be carried out expeditiously and effectively within the required timeframe (see chapter 3 below), aiming at restoring a degree of normalcy in both the social and economic life of the populations. The Proposal is in accordance with the Bank Group Policy Guidelines and consistent with the Bank Group provisions under the Revised Policy Guidelines for Emergency Relief Assistance, and General Regulations of the Special Relief Fund (ADB/BD/WP/2008/211). The present request falls under emergency criteria item (iii), i.e. an emergency situation arising from conflicts, defined as “situations arising from wars, border disputes, civil strife or other political events that cause social and/or economic disruption and hardship”.

2. OVERVIEW OF THE APPEAL FOR EMERGENCY ASSISTANCE

2.1 The International Appeal

2.1.1 The present Proposal for Bank emergency assistance to Liberia is a direct response to the United Nations Appeal of 15 January 2011. The Appeal is specified in the EHAP – issued by the UN Office for the Coordination of Humanitarian Affairs (OCHA) – which initial version of 15 January was revised on 24 March and partially up-dated on 27 March 2011, appealing for resources for current and projected imminent refugees and other affected people in Liberia. While the table overleaf provides an overview of key parameters of the up-dated EHAP, summaries of requirements and funding per appealing organization and sector are provided in annex 6. In broad terms, the response strategy of the Appeal comprises multi-sectoral as well as sector-specific interventions. Overall, through the EHAP, humanitarian agencies aim to ensure basic needs and essential services of the refugee caseload in Liberia, and to provide a safe environment and security from violence and exploitation.

2.1.2 The present Proposal also responds to a request for humanitarian assistance by the GoL to the African Development Bank of 21 March 2011 (annex 5). It is the first such request that is being processed by the Bank in 2011.

2.2 UNHCR and the Liberia Refugee Repatriation and Resettlement Commission

2.2.1 UNHCR is coordinating the UN assistance in Liberia under the overall leadership of the Humanitarian Coordinator and in close coordination with the Liberia Refugee Repatriation and Resettlement Commission (LRRRC), the entity mandated by the government to collaborate with the humanitarian aid agencies. UNHCR and the LRRRC provide strategic direction for the refugee operation jointly with other agencies. UNHCR in consultation with the GoL and the international community has decided on a two-pronged approach to the current crisis: (a) a camp-based approach, where collective efforts will be made to provide basic services using the internationally recognized standards of camp management, and (b) a community-based approach which will allow refugees to be

¹ According to up-dated EHAP figures of 27 March 2011, about 7,800 refugees are located in camps, whereas the rest of the 111,000, i.e. about 103,500 (or about 94% of all refugees) live with host communities.

² The Liberia Inter-Agency Group (consisting of UNHCR, LRRRC, WFP, UNICEF, IOM, et al.) stated in their mission report of 13 March 2011, the “financial system of the country is stretched and on the edge of collapse provoking a gradual deterioration of socio-economic conditions”.

absorbed into existing designated host communities. UNHCR appealed for funds amounting to approx. US\$ 80 million (i.e. about 54% of total funding requested by the EHAP) for activities that aim at ensuring that all refugees fleeing Cote d'Ivoire into Liberia have access to multi-sectoral assistance, including protection; water, sanitation and hygiene; preventive and curative health care; nutrition; basic education; transportation and repair/ maintenance of access roads; shelter; food assistance; etc.

Key parameters of the EHAP (up-dated version of 27 March 2011)

Planning/budgeting horizon	January to June (six months)
Affected population	111,312 refugees who have arrived from Cote d'Ivoire; host communities; plus about 40,000 more refugees and 25,000 Liberian returnees and 10,000 third-country nationals projected.
Key areas of response	- Multi-sectoral - Water, sanitation and hygiene - Health - Food security - Protection - Nutrition - Education - Logistics
Key target beneficiaries	Expected about 150,000 refugees, 25,000 returnees and 10,000 third-country nationals.
Total funding requested	US\$ 146,511,868

2.2.2 To accord protection to those who may flee to Liberia in search of safety, the Interim Legislative Assembly of the Republic of Liberia, in 1993, endorsed an act that established the Liberia Refugee Repatriation and Resettlement Commission (LRRRC). The 1993 Refugee Act made provision for the safety and protection of refugees and asylum seekers in Liberia, in accordance with all the attaining International conventions and protocols ratified by Liberia. As enshrined in the Liberia Refugee Act of 1993, the role of the LRRRC is to provide for the safety and protection and assistance of refugees, internally displaced persons, returnees and asylum seekers residing in Liberia, in accordance with international conventions and protocols ratified by Liberia. Functionally, the LRRRC monitors the activities of asylum seekers and humanitarian workers providing services to them. The Commission also coordinates the activities of institutions working with people of concern and formulates the policy framework under which they provide such services. The LRRRC serves as the government's lead agency on matters relating to refugees and asylum seekers in Liberia and works in close collaboration with the UNHCR. The LRRRC has committed a large number of its staff in refugee populated communities to beef-up humanitarian interventions. Given its experience and expertise in providing, coordinating and monitoring emergency assistance to refugees, the LRRRC will be the government's agency to collaborate with UNHCR on the Bank's proposed emergency support to Liberia.

3. THE PROPOSED EMERGENCY ASSISTANCE OPERATION

3.1 Objectives and Description of the Emergency Assistance

3.1.1 The objective of the Bank's emergency assistance to Liberia is to provide urgent humanitarian support to the refugees and host communities on the Liberia-Cote d'Ivoire border in order to meet their most pressing needs³. The Bank's emergency operation will be in support of UNHCR's multi-sectoral relief programs spelled out in the EHAP. It must be timely and effective in terms of humanitarian needs to be addressed, as well as commensurate with the overall amount available from the SRF. The Bank's emergency operation will focus on the following two main areas to ensure a maximum humanitarian impact for refugees and host communities:

- (i) spot improvements/repairs of log bridges, which is paramount to allow for the transport of emergency assistance (not only from the Bank but also from other agencies) to the remote areas in Liberia's east where the refugee camps and host communities are located, in particular in view of the imminent rainy season; and

³ As shown in footnote 2, the vast majority of refugees is located in host communities. Therefore, any humanitarian assistance will need to be provided to both refugees and the population in host communities.

- (ii) meeting basic humanitarian requirements, including shelter, health care, child nutrition and immunization, and water and sanitation.

3.1.2 Overall, it is expected that between 25,000 and 30,000 persons, including about 10,000 children, in 3 principal host communities (Buutuo, Loguatuo, and Gborplay) and the main refugee camp called “Bahn” located in Nimba County, which is the hardest hit by the current humanitarian crisis, will benefit from the proposed Bank emergency assistance. While the Project Simplified Logical Framework specifies the expected results (outputs, outcomes and impacts) from the proposed emergency operation, the expected number of beneficiaries for each individual activity to be funded is indicated in annex 2.

3.2 Cost and Source of Finance

The total cost of the Bank’s emergency assistance to Liberia is estimated at US\$ 630,000. The cost breakdown is attached in annex 2. The funds provided by the Bank are restricted and earmarked for the purposes of urgent humanitarian assistance to the refugees and host communities at the Liberia-Cote d’Ivoire border in order to meet their most pressing needs.

3.3 Implementation Arrangements and Schedule

UNHCR will be responsible for implementing the Bank’s emergency assistance in support of the refugees and host communities located at the affected border regions, in close collaboration with the LRRRC and NGOs as appropriate for the implementation of the operation. UNHCR has a strong procurement system and infrastructure in place which could be readily used to quickly procure goods and services needed. UNHCR and LRRRC will sensitize host communities that the emergency support is a temporary measure, in order to avoid the creation of wrong expectations and dependencies. The total duration of the emergency assistance will not exceed six (6) months. Funds that will not be disbursed within this period will be cancelled. Annex 4 contains the implementation schedule for the proposed emergency operation.

3.4 Procurement and Disbursement Arrangements

3.4.1 In accordance with Article 3.8 of the Revised Policy Guidelines and Procedures for Emergency Relief Assistance, given the distinctive nature of emergency operations, the restriction of procurement eligibility is not applicable. Considering the situation on the ground, whereby there are no capable government or any other organisations to manage the grant, UNHCR shall be used, in accordance with Article 3.15 (allowing the selection of specialized agencies when they are qualified to provide technical assistance and advice in their area of expertise), as well as Article 3.10 (b) (allows for single source in emergency cases) of the “Rules and Procedures for the Use of Consultants”. UNHCR shall be used as an Implementing Agency to manage the operation on behalf of the government.

3.4.2 While Article 3.8 of the Revised Policy Guidelines and Procedures for Emergency Relief Assistance requires the use of Bank Rules and Procedures, it is requested that the Board of Executive Directors exceptionally grant a waiver exempting UNHCR from the use of the Bank’s Procurement Rules for the proposed operation. Thus, in the context of the implementation of this operation, UNHCR shall procure and distribute goods as in its similar operations around the world and listed in Annex 2.

3.4.2 Given the emergency nature of the proposed operation, it is recommended that the funds be disbursed in one single tranche, through direct payment into a UNHCR bank account, upon submission of evidence to the Bank of the opening of the bank account to receive the proceeds of the grant. Disbursements will also be subjected to the signature by of a tri-partite Letter of Agreement (LoA) between the Bank, UNHCR and GoL.

3.5 Reporting, Supervision and Auditing

While UNHCR shall not be required to prepare separate financial and audit reports for the emergency operation, it shall submit to the Bank their regular consolidated and audited report for the year 2011. The report will confirm the utilization of the fund in line with the tri-partite LoA. Furthermore, UNHCR will submit to the Bank at the end of the operation a written confirmation from a Senior Officer that UNHCR has complied with the terms of the LoA. UNHCR will deduct an administrative cost of not more than 7% from the ADB grant. For purposes of visibility, the Bank's name and contribution shall appear in the UNHCR 2011 consolidated financial report disclosing the list of contributors for the year. While there shall not be specific Bank field supervision missions to monitor the implementation of the proposed emergency operation, the Bank will closely follow progress made through other Bank missions to Liberia.

4. CONCLUSIONS, RECOMMENDATIONS AND CONDITIONS FOR DISBURSEMENT

4.1 Conclusions and Recommendations

4.1.1 Given the heavy burden on the GoL to adequately care for the Ivorian refugees and host communities in the country's regions affected by the current crisis, it is important for the international community to respond urgently to pressing humanitarian needs. In view of the severe suffering of refugees and host communities alike, the present Proposal for Bank Group emergency assistance in form of a US\$ 630,000 grant to UNHCR Liberia is timely and will complement the efforts of GoL and partners.

4.1.2 It is recommended that the Bank Group Board of Executive Directors approves a US\$ 630,000 grant from the SRF for Emergency Assistance to Liberia, in support of a concerted effort of the GoL and the international community to provide relief aid to refugees and host communities in the regions affected by the current humanitarian crisis.

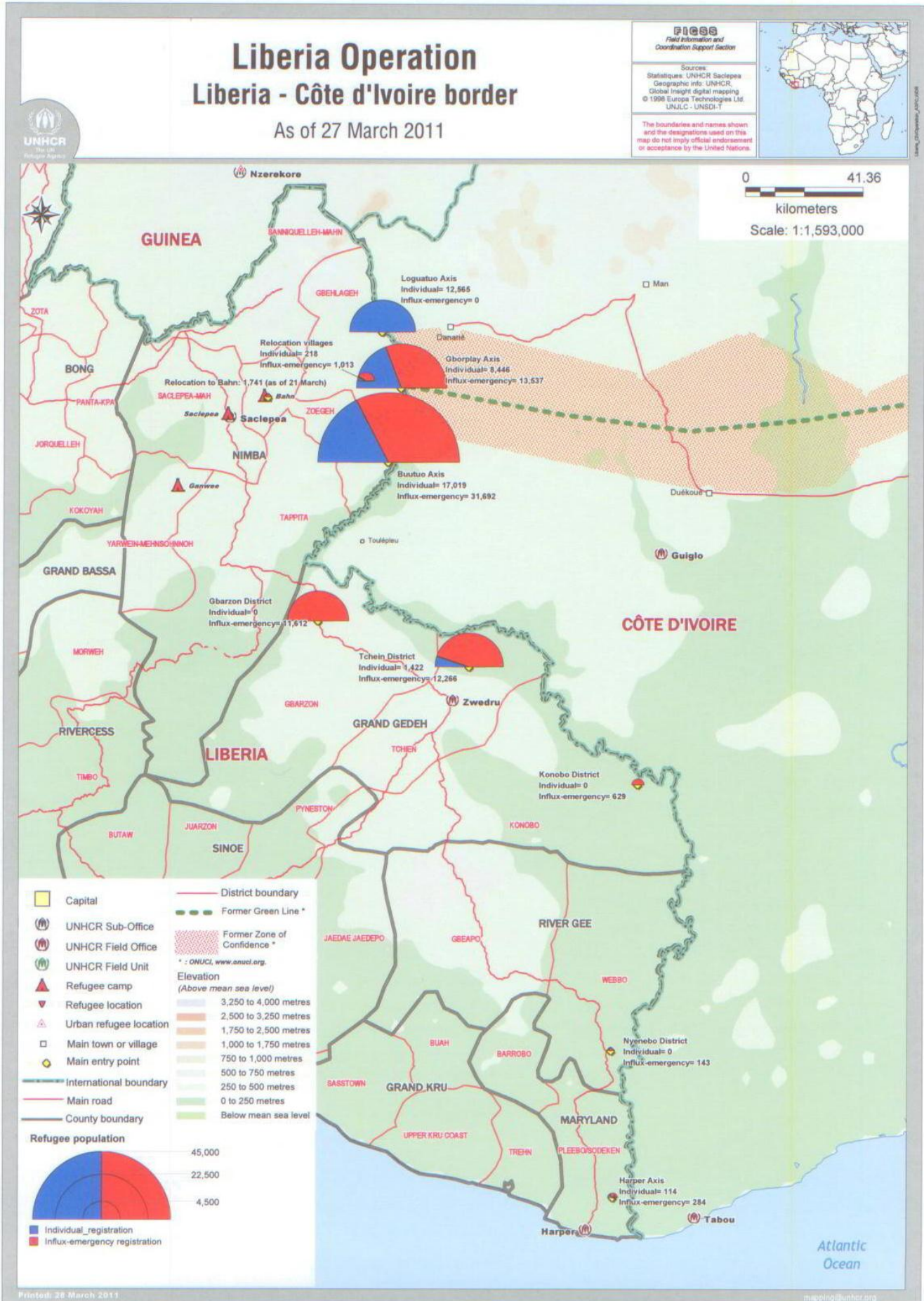
4.2 Conditions for Disbursement

The grant resources will be disbursed in one tranche, subject to the following conditions:

- i) Signature of the tripartite LoA by the Bank, the GoL, and UNHCR;
- ii) Communication by UNHCR to the Bank of the details of their bank account to which the grant resources will be transferred.

Annex 1 – Map of Affected Area and Statistics on Refugees

Map of Affected Area



Statistics on Refugees

Ivorian refugee statistics in Liberia

1 December 2010 - 27 March 2011

Key	Individual registration data	Influx-emergency registration data	Total data
	■	■	■

1. Registered refugee population

Individual registration	Influx-emergency registration
39,784	71,528

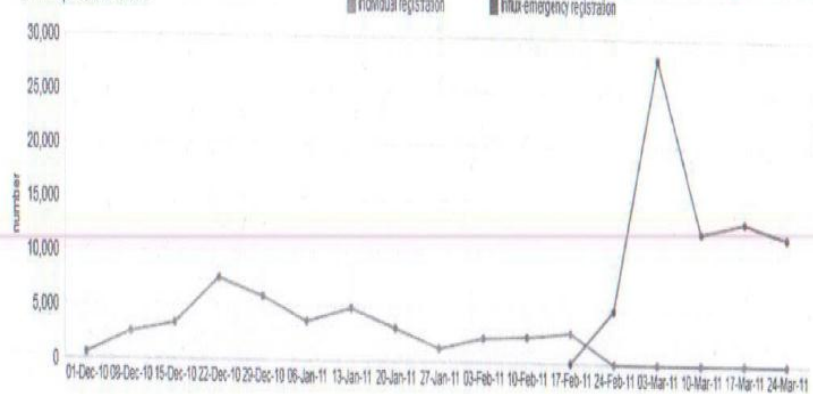
*new arrivals since 24 February 2011

2. Refugee population by location

2.1. Individually registered

County	Axis	Households	Individuals	% Female-1H
Grand Gedeh County	Gbarzon District	0	0	0%
	Konobo District	0	0	0%
	Tchein District	673	1,422	62%
	Grand Gedeh County	673	1,422	62%
River Gee County	Nyenebo District	0	0	0%
	River Gee County	0	0	0%
Montserrado County	Greater Monrovia District	0	0	0%
	Montserrado County	0	0	0%
Maryland County	Harper Axis	57	114	33%
	Maryland County	57	114	33%
Nimba County	Buutu Axis	4,738	17,019	85%
	Gbooplay Axis	2,259	8,446	55%
	Logatuu Axis	3,670	12,965	62%
	Refugee camps	0	0	0%
	Relocation villages	79	218	70%
Nimba County		10,747	38,248	83%
Liberia		11,517	39,784	85%

1.1. Population trend



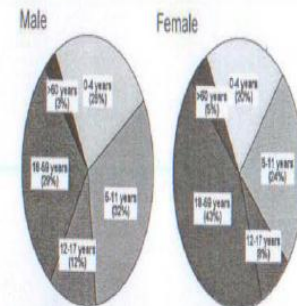
2.2. Influx-emergency registered

County	Axis	Households	Individuals	% Female-1H
Grand Gedeh County	Gbarzon District	4,587	11,512	56%
	Konobo District	284	629	75%
	Tchein District	4,077	12,286	54%
	Grand Gedeh County	8,948	24,507	61%
River Gee County	Nyenebo District	10	143	50%
	River Gee County	10	143	50%
Montserrado County	Greater Monrovia District	150	267	50%
	Montserrado County	150	267	50%
Maryland County	Harper Axis	141	284	29%
	Maryland County	141	284	29%
Nimba County	Buutu Axis	7,045	31,882	57%
	Gbooplay Axis	3,558	13,537	47%
	Logatuu Axis	0	0	0%
	Refugee camps	46	85	2%
	Relocation villages	223	1,013	37%
Nimba County		10,902	46,327	36%
Liberia		20,151	71,528	46%

2.3. Relocation

Location	Individuals	Households
Refugee camps	2,478	825
Transit sites	5,323	2,414
Way station	0	0
Total	7,801	3,239

3. Age composition by gender**



** refers to individual registration data

4. Detailed age and gender breakdown

County	Axis	0-4			5-11			12-17			18-59			>60			Total			
		M	F	Total	M	F	Total	M	F	Total	M	F	Total	M	F	Total	M	F	Total	
Grand Gedeh County	Gbarzon District	0	0	0	0	0	0	0	0	0	0	0	0	0	0	0	0	0	0	0
	Konobo District	0	0	0	0	0	0	0	0	0	0	0	0	0	0	0	0	0	0	0
	Tchein District	165	187	352	109	115	225	49	52	101	258	442	700	13	31	44	594	828	1,422	
	Grand Gedeh County	165	187	352	109	115	225	49	52	101	258	442	700	13	31	44	594	828	1,422	
River Gee County	Nyenebo District	0	0	0	0	0	0	0	0	0	0	0	0	0	0	0	0	0	0	
	River Gee County	0	0	0	0	0	0	0	0	0	0	0	0	0	0	0	0	0	0	
Montserrado County	Greater Monrovia District	0	0	0	0	0	0	0	0	0	0	0	0	0	0	0	0	0	0	
	Montserrado County	0	0	0	0	0	0	0	0	0	0	0	0	0	0	0	0	0	0	
Maryland County	Harper Axis	13	10	23	10	13	23	4	5	9	40	19	59	0	0	0	67	47	114	
	Maryland County	13	10	23	10	13	23	4	5	9	40	19	59	0	0	0	67	47	114	
Nimba County	Buutu Axis	1,952	1,915	3,877	2,520	2,316	4,836	898	765	1,663	1,886	3,931	5,917	247	479	726	7,563	9,456	17,019	
	Gbooplay Axis	788	831	1,619	1,183	1,195	2,378	452	356	808	1,271	2,024	3,295	133	213	346	3,831	4,615	8,446	
	Logatuu Axis	1,418	1,479	2,897	1,789	1,697	3,486	640	535	1,175	1,590	2,964	4,554	162	281	453	5,602	6,993	12,595	
	Refugee camps	0	0	0	0	0	0	0	0	0	0	0	0	0	0	0	0	0	0	
	Relocation villages	21	24	45	28	26	54	19	13	32	27	58	85	0	2	2	96	122	218	
	Nimba County	4,189	4,245	8,434	5,520	5,234	10,754	2,009	1,669	3,678	4,874	8,977	13,851	542	985	1,527	17,092	21,156	38,248	
Liberia	4,367	4,446	8,813	5,639	5,363	11,002	2,062	1,726	3,788	5,172	9,433	14,610	555	1,016	1,571	17,763	22,031	39,794		

Note: this summary does not yet include refugees who have been individually registered in newly established UNHCR camps, transit sites and way-stations.

Annex 2 – Activities and Budget; Benefitting Communities, Refugees and Gender Distribution

Activities and Budget

COMPONENT	ACTIVITY	QUANTITY	UNIT COST (US\$)	AMOUNT
1. Infrastructure Reinforcement	Reinforcing damaged log bridges for 30,000 beneficiaries including refugees and host community members	Purchase of 2,000 m ³ of wood to rehabilitate 31 damaged log bridges distributed as follow: Garwee: 15 Bluehlay: 2 Canwarn: 2 Zehlay to Bemiplay: 10 Gblorplay: 2	25	50,000
	Contracting out of civil works	Hiring of 25 workers for 120 days @ 5 US\$/day	5	15,000
		Lump-sum purchase of hand tools	5,000	5,000
		Purchase of 5 power-saws	1,500	7,500
Sub Total				77,500
2. Sheltering of Refugees	Building emergency shelters for 1,700 beneficiaries	Constructing 340 shelters	250	85,000
Sub Total				85,000
3. Health Care Response	Hiring urgently needed health personnel	Paying 4 months topping-up salaries for 15 ambulance staff already on the Ministry of Health pay roll	250	15,000
	Providing medical care kits for treatment of over 8,000 people	Acquisition of 2,000 units of infusion drugs @ 15 US\$/unit	15	30,000
		Provision of 10,000 units of general medication @ 5 US\$/unit	5	50,000
		Provision of 3,000 units of renewable supplies @ 10 US\$/unit	10	30,000
		Provision of 2,000 boxes of basic unit without malaria drugs @ 10 US\$/unit	10	20,000
Sub Total				145,000
4. Child Nutrition and Immunization	Monitoring of children nutritional status of 10,000 children	Conduct of 2 children nutritional surveys @ 5,000 US\$/survey	5,000	10,000
	Providing nutritional materials for 10,000 children	Procurement of 10 units of nutritional items including high protein biscuits and therapeutic milk @ 2,000 US\$/unit	2,000	20,000
	Conducting immunization awareness campaigns for 25,000 beneficiaries (these campaigns will target children and adults who are mainly parents and guardians of children)	Conduct of 2 immunization awareness campaigns @ 5,000 US\$/campaign	5,000	10,000
	Providing immunization materials for 10,000 children	Procurement of 10 units of immunization items including vaccines, syringes and needles @ 3,840 US\$/unit	3,840	38,400
Sub Total				78,400
5. Water and Sanitation Services	Providing water distribution facilities for 5,000 beneficiaries	Water supply equipment (pumps, tubes, bladders and treatment test) for 20 water points @ 2,000 US\$/water point.	2,000	40,000
	Providing sanitation materials for 5,000 beneficiaries.	20,000 units of soap @ 1 US\$/unit	1.00	20,000
		5,000 units of jerry can @ 3.50 US\$/unit	3.50	17,500
		5,000 units of buckets @ 4.50 US\$/unit	4.50	22,500
		3,000 units of sanitary napkins @ 5.00 US\$/unit	5.00	15,000
	Providing sanitation facilities for 5,000 beneficiaries	Construction of 200 emergency latrines @ 250 US\$/latrine	250	50,000
Sub Total				165,000

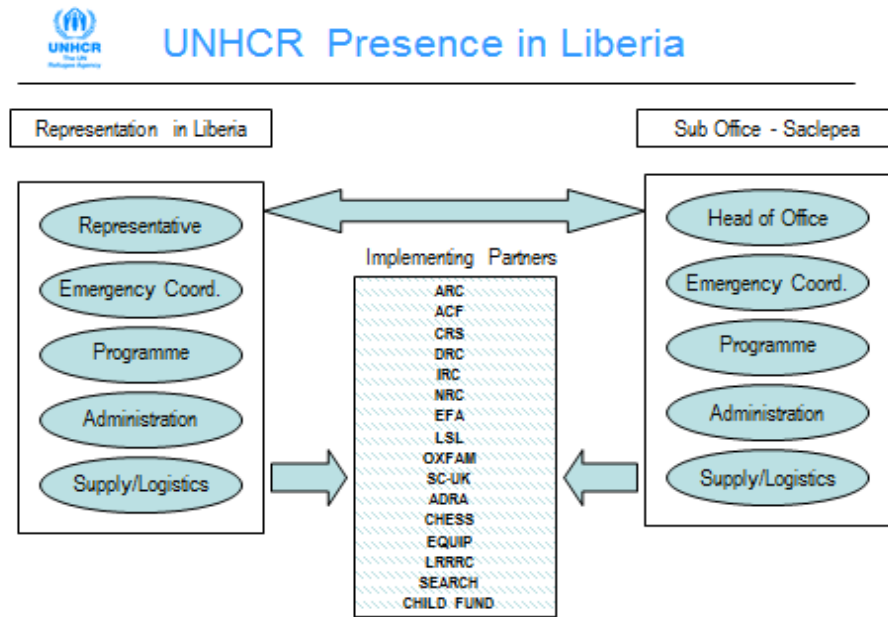
6. Project Monitoring, Supervision and Reporting	Supporting LRRRC to carry out coordination, monitoring and reporting	Transportation (fuels, staff DSA)		32,340
		Communication		2,660
Sub Total				35,000
7. UNHCR Admin. Fee (7%)				44,100
Sub Total				44,100
Grand TOTAL				630,000

Benefitting Communities, Refugees and Gender Distribution

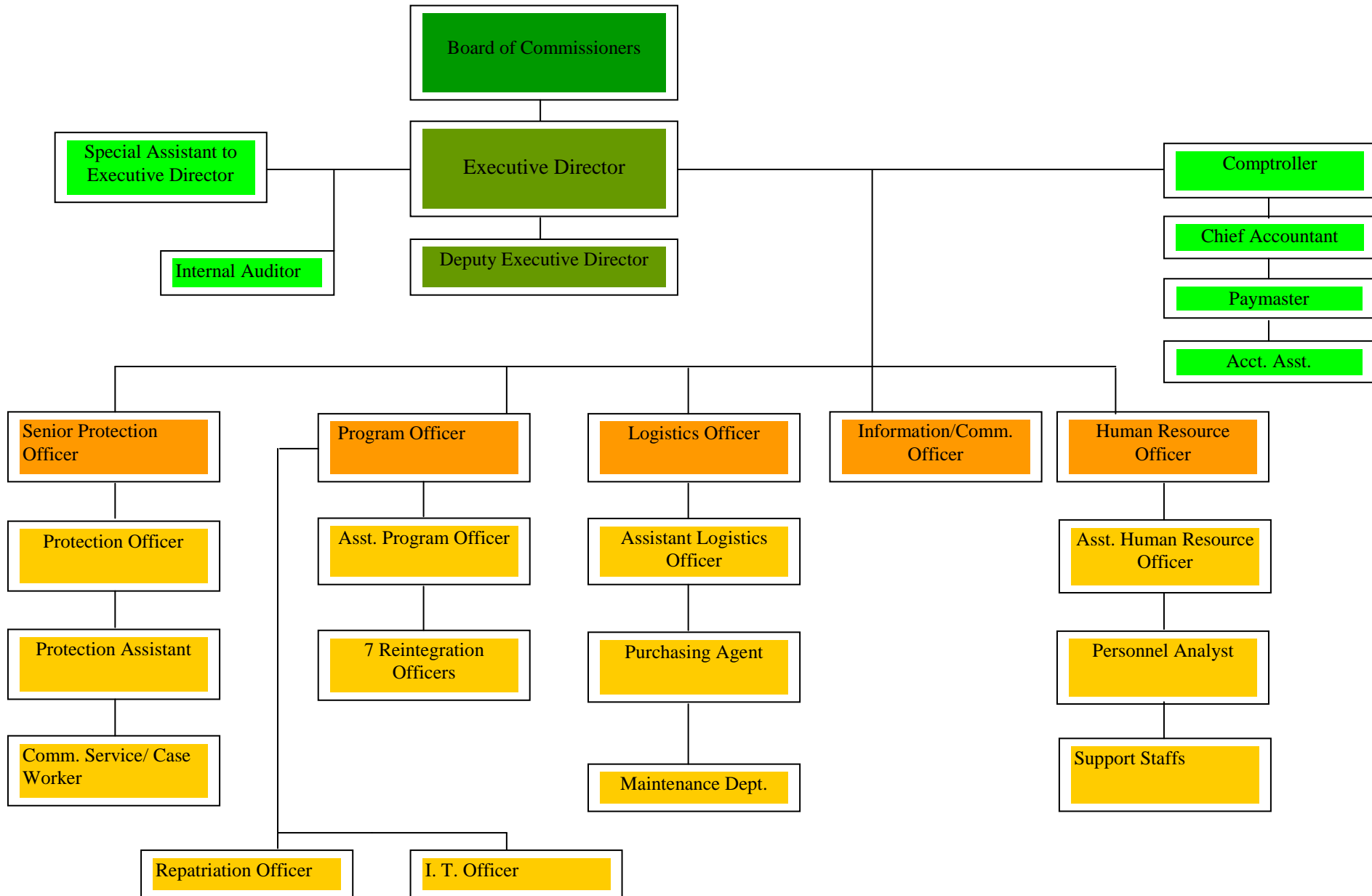
NAME OF HOST COMMUNITY	REFUGEES			HOST COMMUNITY
	Male	Female	Children	
Buutuo	7,806	9,673	10,626	20,992
Loguatuo	5,712	7,132	7,724	9,995
Gborplay	4,061	4,804	5,021	9,192
Bahn Refugee Camp	1,268	1,189	1,359	7,258
Total	18,847	22,798	24,730	47,437

Annex 3 – UNHCR’s and LRRRC’s Operational Structure

UNHCR’s Operational Structure



LRRRC's Organizational Chart



Annex 4 – Implementation Schedule

Activities	2011			
	April	May	June	July
Reinforcing damaged log bridges				
Contracting out of civil works				
Building emergency shelters				
Hiring health personnel				
Providing medical care kits				
Monitoring of children nutritional status				
Conducting immunization awareness campaigns				
Providing nutrition to children and vaccination				
Providing water and sanitation facilities				
Supporting LRRRC to carry out coordination, monitoring and reporting				

Annex 5 – Request from the Government of Liberia for Emergency Assistance



OFFICE OF THE MINISTER

REPUBLIC OF LIBERIA MINISTRY OF FINANCE MONROVIA, LIBERIA

GOL/MF/2-1/AKN/amu/5338/*11

March 21, 2011

Dr. Donald Kaberuka
President
African Development Bank
B.P. 323-1002
Tunis Belvedere, Tunisia

Dear Dr. Kaberuka:

We extend compliments and express our deepest gratitude to you and the Bank Family for the tremendous contribution your institution has made and continues to make towards Liberia's recovery and reconstruction process.

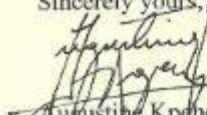
You will recall, Mr. President, that the crisis in The Ivory Coast recently escalated to a level that prompted an influx of refugees into neighboring countries, including Liberia. At the onset, it was believed that the crisis would have been short lived and that the situation would return to normalcy within a reasonable period. However, this has not been the case, given the increase in the influx on a daily basis as the crisis intensifies. As a result, the Government of Liberia is finding it extremely difficult to absorb this huge influx in the midst of its limited fiscal space.

Currently, there is an increasing need to address the plights of these refugees, especially in the area of shelter, food and safe drinking water, medicine, clothing, and the provision of other basic social services

In view of the aforementioned, we kindly request from the African Development Bank, through your honorable office, humanitarian assistance in the amount of One Million United States Dollars (1,000,000 USD) to address what is clearly a humanitarian crisis.

Kindly accept assurances of my high esteem.

Sincerely yours,


Augustine Kpoh Ngafuan
MINISTER

Annex 6 – UN Appeal to the International Community for Emergency Assistance to Liberia

Table I: Summary of Requirements and Funding (grouped by sector)

Liberia Emergency Humanitarian Action Plan 2011 as of 24 March 2011 http://fts.unocha.org					
Compiled by OCHA on the basis of information provided by donors and appealing organizations.					
Sector	Original requirements (\$)	Revised requirements (\$)	Funding (\$)	% Covered	Unmet requirements (\$)
AGRICULTURE	2,931,500	5,863,000	498,930	9%	5,364,070
COORDINATION AND SUPPORT SERVICES	3,108,534	4,975,868	898,907	18%	4,076,961
EDUCATION	1,662,277	6,952,596	618,191	9%	6,334,405
FOOD	7,860,424	31,850,478	15,173,721	48%	16,676,757
HEALTH	3,742,496	7,361,424	834,221	11%	6,527,203
MULTI-SECTOR	31,016,007	79,775,368	15,466,375	19%	64,308,993
PROTECTION/HUMAN RIGHTS/RULE OF LAW	3,313,500	6,643,825	1,019,685	15%	5,624,140
WATER AND SANITATION	1,391,000	3,089,304	549,596	18%	2,539,708
Grand Total	55,025,738	146,511,863	35,059,626	24%	111,452,237

Table II: Summary of Requirements and Funding (grouped by appealing organization)

Liberia Emergency Humanitarian Action Plan 2011 as of 24 March 2011 http://fts.unocha.org					
Compiled by OCHA on the basis of information provided by donors and appealing organizations.					
Appealing organization	Original requirements (\$)	Revised requirements (\$)	Funding (\$)	% Covered	Unmet requirements (\$)
FAO	2,931,500	5,863,000	498,930	9%	5,364,070
IOM	2,206,000	2,206,000	-	0%	2,206,000
UNAIDS	568,320	547,305	-	0%	547,305
UNFPA	813,250	1,433,800	99,636	7%	1,334,164
UNHCR	31,016,007	79,775,368	15,466,375	19%	64,308,993
UNICEF	5,715,593	18,882,133	2,730,961	14%	16,151,172
WFP	10,968,958	36,826,346	16,072,628	44%	20,753,718
WHO	806,110	977,911	191,096	20%	786,815
Grand Total	55,025,738	146,511,863	35,059,626	24%	111,452,237

NOTE: "Funding" means Contributions + Commitments

Pledge: a non-binding announcement of an intended contribution or allocation by the donor. ("Uncommitted pledge" on these tables indicates the balance of original pledges not yet committed.)

Commitment: creation of a legal, contractual obligation between the donor and recipient entity, specifying the amount to be contributed.

Contribution: the actual payment of funds or transfer of in-kind goods from the donor to the recipient entity.