



DRC Agricultural Business Parks: A progress report

John M. Ulimwengu, PhD
Senior Advisor
(DRC Prime Minister Office)
Senior Research Fellow
(International Food Policy Research Institute)



DRC
Agricultural
Business Parks

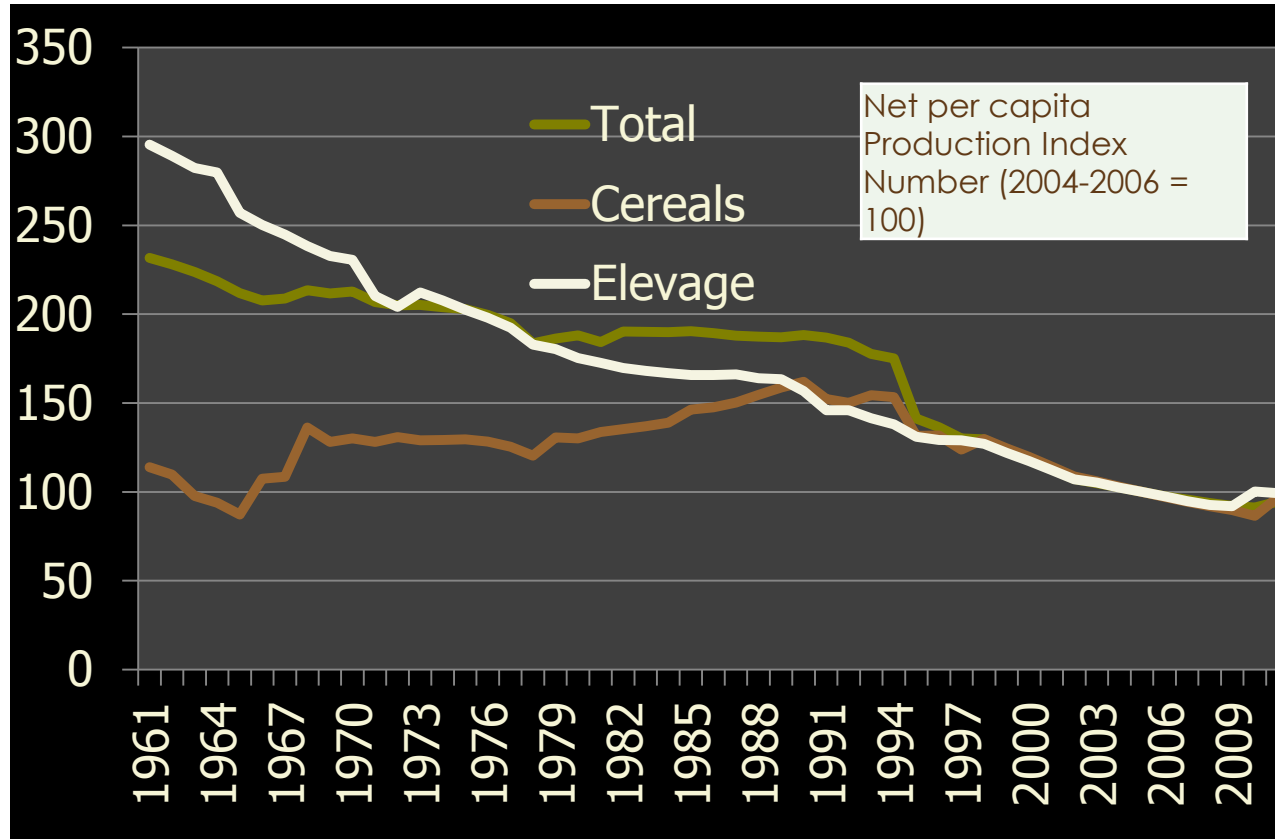
GROWTH TYPOLOGY

		Structural transformation, industrialization	
		Low	High
Fundamentals (Human capital and institutions)	Low	No growth	Episodic growth
	High	Low growth	Rapid, sustained and inclusive growth

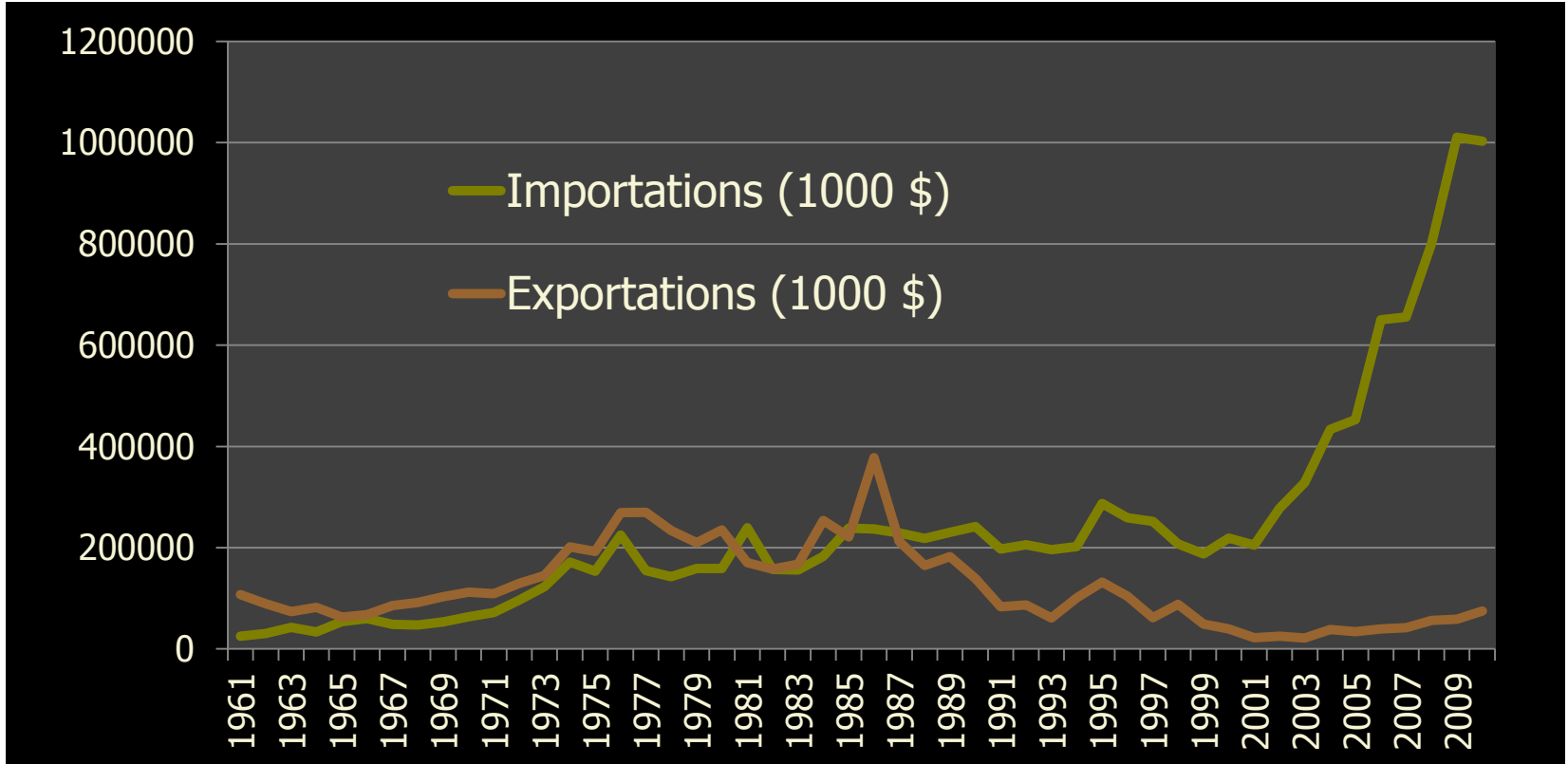
DRC: Drastic decline in ag productivity



DRC
Agricultural
Business Parks

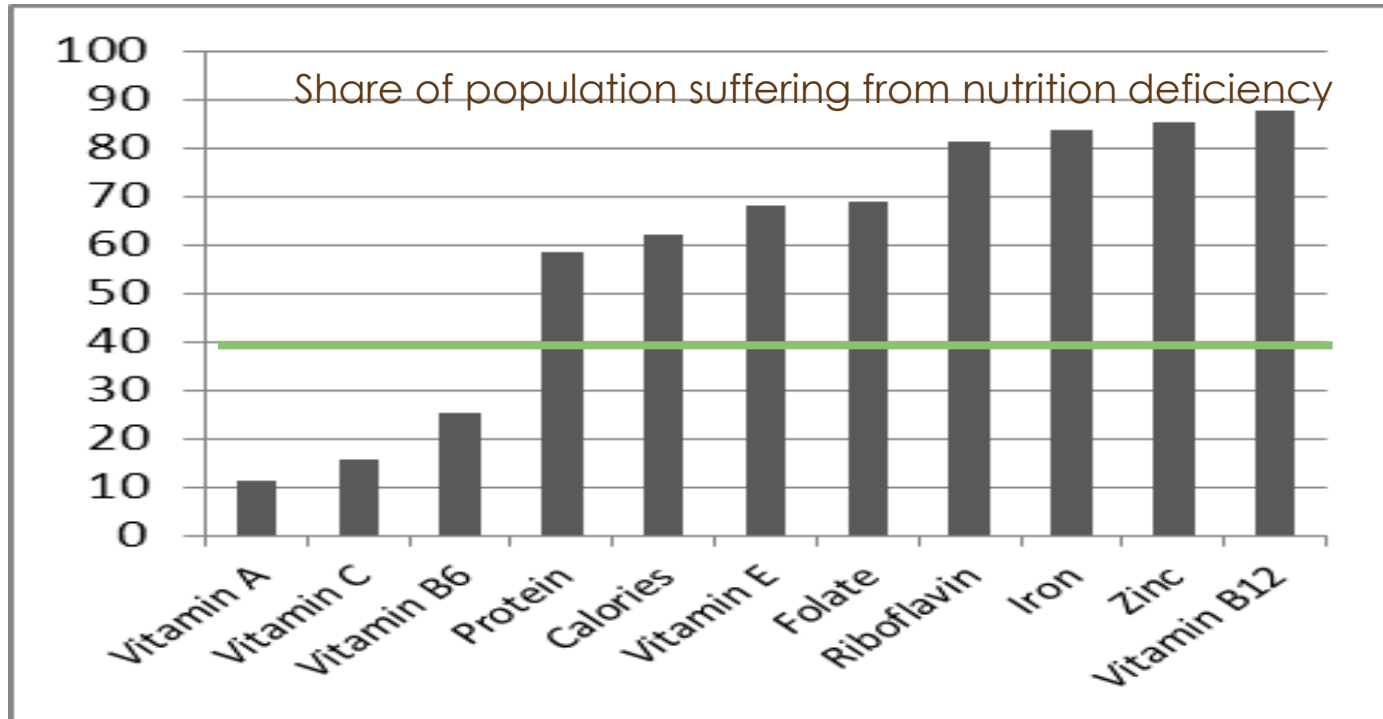


DRC: Increased dependence on food imports



DRC: High poverty and malnutrition

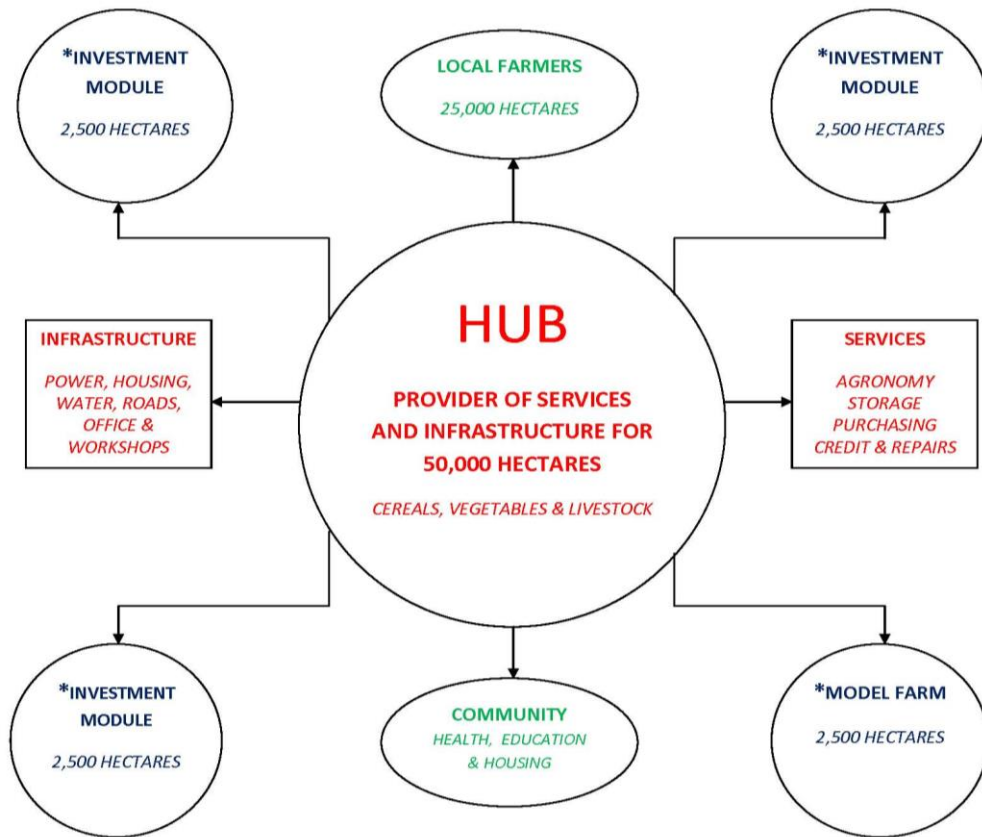
- At least 63% of the population live with less than \$1 a day per person.



Holistic Approach

- Land security;
- Evidence based design and planning;
- Basic infrastructures;
- Customs and fiscal incentives;
- Pro-agricultural financing system;
- Human capital: healthy and skilled labor and entrepreneurs;
- Market access: inputs and outputs;
- Research.

Agricultural Business Park: Bringing services closer to producers and processors

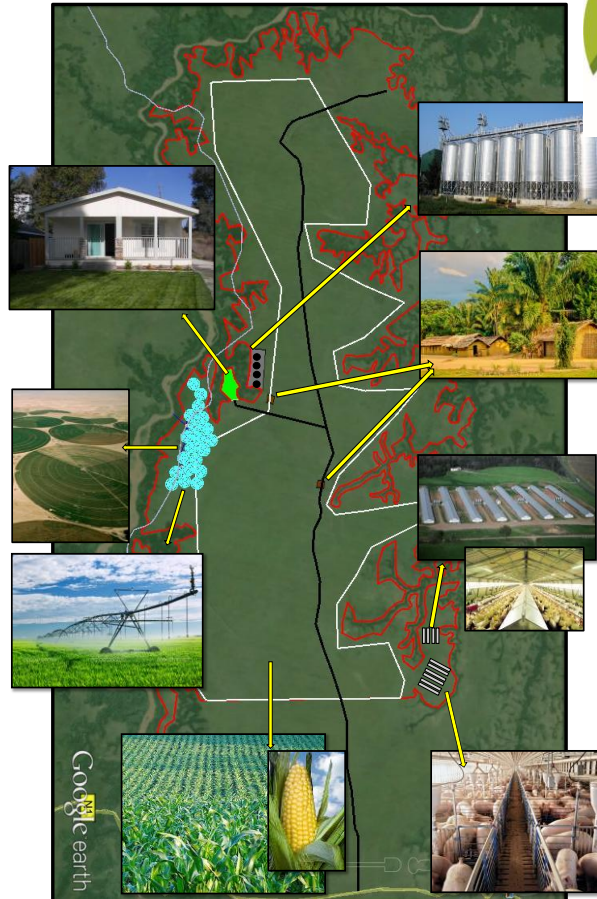


*Ten investment modules including the model farm would be planned for a total of 25,000 hectares for outside investors.



parc agro industriel de Bukanga-Lonzo

www.parcagro.com



- ❑ Phase I (53 millions USD + 30 millions USD for electricity) :
 - ◆ Grains (Maize, soya, beans);
 - ◆ Area (10.000-50.000 ha)
- ❑ Phase IIA (100 millions USD):
 - ◆ Vegetables (under irrigation over 1000 ha);
 - ◆ Production: 500 tons/day
- ❑ Phase IIB (120 million USD):
 - ◆ Livestock (Eggs, chicken, fish and pork).
 - ◆ Production: 40.000-45.000 chicken/week.
- ❑ Distribution platform (100 millions USD)

ACHIEVEMENTS



□Phase I :

- 2014-2015: Planted 5,000 ha of maize
- 2015-2016: Planted 3,000 ha
- Electricity: 56MW power station by end of December

□Phase IIA:

- 20 irrigation pivots installed (50 ha each) for vegetables production;

□Phase IIB (Protein production: chicken, pork, fish, eggs)

- Awaiting electricity

□Distribution platform: under construction

□Support to small scale farmers:

- Planted 300 ha of Cassava
- Expected 4,000 T of Cassava roots
- Cassava flour milling being installed

□Fertilizer plant: production starts April 2016

VISION FOR 2015-2017

